



Post Office Box 207 · Shelby, NC 28151-0207

March 15, 2022

To: All Prospective Bidders

From: Tyler Brooks, Stormwater/Engineering Coordinator

RE: Concrete ADA Ramp and Sidewalk Construction Project

The City of Shelby is accepting bids on a project that installs ADA complaint ramps and constructs a sidewalk. There will be 15 ADA ramp installation/replacements as detailed below. Listed below are the contractor's responsibilities for this project.

Bids are due by 2:00 PM on Tuesday March 29, 2022. Bids may be submitted either electronic to tyler.brooks@cityofshelby.com or hard copy to:

**George W. Clay, Jr. Utility Operations Center
Attn: Tyler Brooks
824 W Grover Street, Shelby, NC 28150**

Contractor's Responsibilities:

ADA Ramp Replacements:

- Replace 6 existing sidewalk ramps to meet ADA compliance and meet City of Shelby Standard Detail 2.06A, 2.06B, 2.06C. Each ramp shall include retrofitted sidewalk along with an inset ADA dome mat black in color.
- Locations are as follows:

Quantity	Intersection	Location
1	S. Morgan St. & Royster Ave	NW Corner
1	Calvary St. & Gardner St	SE Corner
1	Cora St. & Sumter St	NW Corner
1	Steeple St. & N. Lafayette St	SW Corner
1	Martin St. & Blanton St.-	NW corner
1	Thompson St. & Blanton St	NW corner

ADA Ramp Installation:

- Install 9 new sidewalk ramp to meet ADA compliance and meet City of Shelby Standard Detail 2.06A, 2.06B, 2.06C. Each ramp shall include retrofitted sidewalk along with an inset ADA dome mat black in color.

- Location are as follows:

Quantity	Intersection	Location
1	Hobbs Ave. & Piedmont Ave.	SE corner
1	Martin St. & Blanton St.	NW Corner
2	Webb Dr. & Piedmont Ave	SW & SE corners
2	Webb Dr. & Atlantic Ave	NW & NE corners
2	Hobbs Ave. & Webb Dr	NE & SE corners
1	Hobbs Ave. & Piedmont Ave	SW corner

Sidewalk Construction

- Install approximately 500 linear feet of new sidewalk that meets ADA compliance and meet City of Shelby Standard Detail 2.05.
- The sidewalk shall be 5' wide and be minimum of 4" thick.
- Sections where the sidewalk intersects residential driveway the driveway shall be replaced from the street to the sidewalk. This concrete shall be 6" thick.
- The sidewalk shall leave 3' utility strip between curb and sidewalk

General Notes

- Contractor will be responsible for cleaning up and disposing of all construction materials from the project site upon completion of the project.
- Contractor shall saw cut the asphalt square and coordinate with the City of Shelby to make the asphalt repair.
- All ramp installations shall replace curb and gutter that transitions to meet ADA standards.
- Contractor shall coordinate project with City of Shelby Engineering Department.
- Contractor shall follow ADA regulations and City of Shelby Standard Details
- The surrounding work area shall be graded flush with the edge of the ramp and stabilized with seed and straw.
- Traffic and pedestrian control will be the responsibility of the contractor.
- A utility locate must be called in prior to work commencing

All work completed as part of this project will carry a one (1) year warranty beginning at the completion of the project.

The bid award for this project will be based on the "Total Project Bid."

This list is intended to provide the basic scope of work; any incidental work that is related to this project will be the sole responsibility of the Contractor.

The City reserves the right to accept or reject any and/or all bids. **A valid contractor's license must be provided (if required based on bid amount).** A Certificate of Insurance will be required from the low bidder prior to beginning construction.

Work shall commence within 14 calendar days of written Notice to Proceed and shall be completed within 45 calendar days thereafter.

Liquidated damages in the amount of \$250 per day will be enforced for work not completed by the applicable deadline.

Please call Tyler Brooks at 704-669-2064 if you have any questions during the bidding or construction process.

Submitted by:

Company Name: _____

NC Contractor's License #: _____

Name: _____

Title: _____

Total Project Bid: _____ Lump Sum

Unit cost for additions/deletion to scope of work:

All Work shall follow the City of Shelby Standard Details

4" Thick Sidewalk (Standard Detail 2.05): _____ per sq. ft.

6" Thick Sidewalk (Standard Detail 2.05): _____ per sq. ft.

ADA Ramp Replacement (Standard Detail 2.06) _____ each

Accepted by City of Shelby:

Name, Title: _____

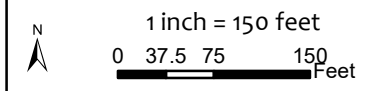
Signature: _____

Date: _____



- Ramp Replacement
- Ramp Installation
- Sidewalk Installation
- Existing Sidewalk
- Driveway Replacement

Piedmont Avenue Area
Ramp and Sidewalk Replacement and Installation



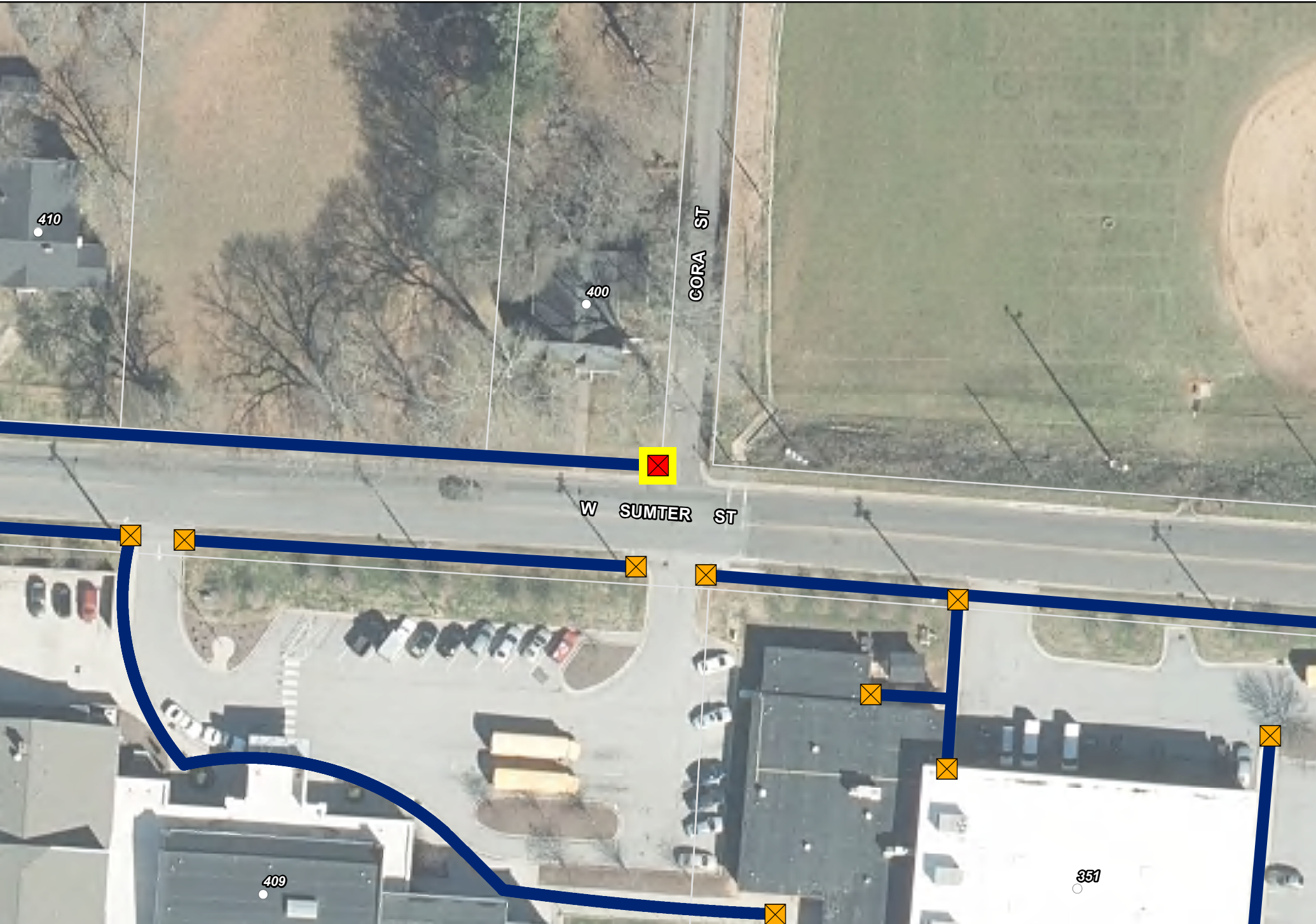


-  Ramp Replacement
-  Existing Ramp
-  Existing Sidewalk

Calvary Street and Gardner Street
Ramp Replacement

N
1 inch = 50 feet
0 12.5 25 50 Feet





- Ramp Replacement
- Existing Ramp
- Existing Sidewalk

Cora Street and West Sumter Street
Ramp Replacement

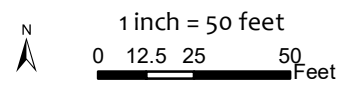
N
1 inch = 50 feet
0 12.5 25 50 Feet





-  Ramp Replacement
-  Existing Ramp
-  Existing Sidewalk

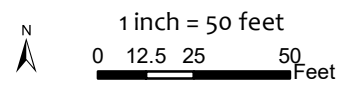
Martin Street and Blanton Street Ramp Replacement

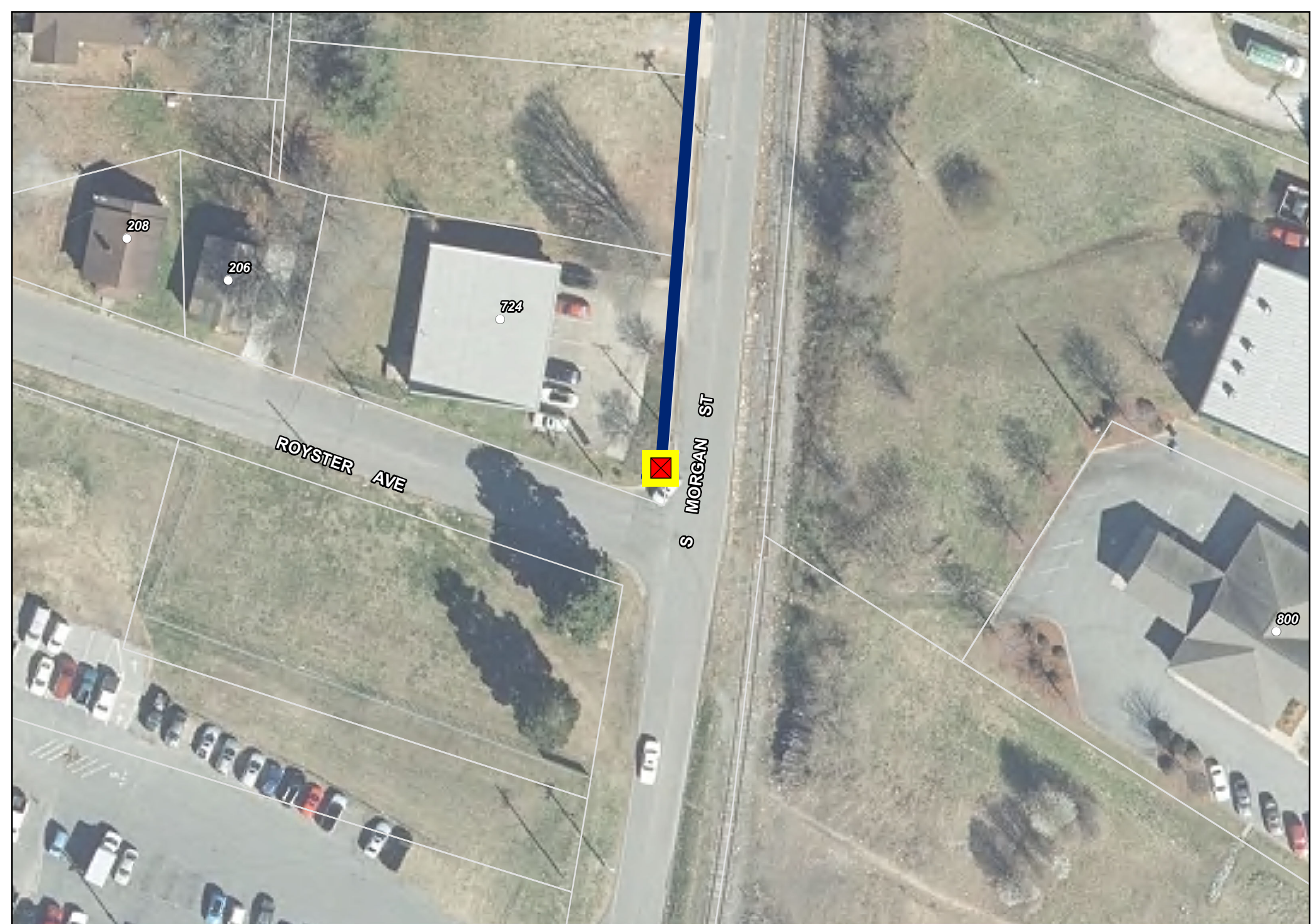




-  Ramp Replacement
-  Existing Ramp
-  Existing Sidewalk

S Thompson Street and Blanton Street
Ramp Replacement





Ramp Replacement



Existing Ramp



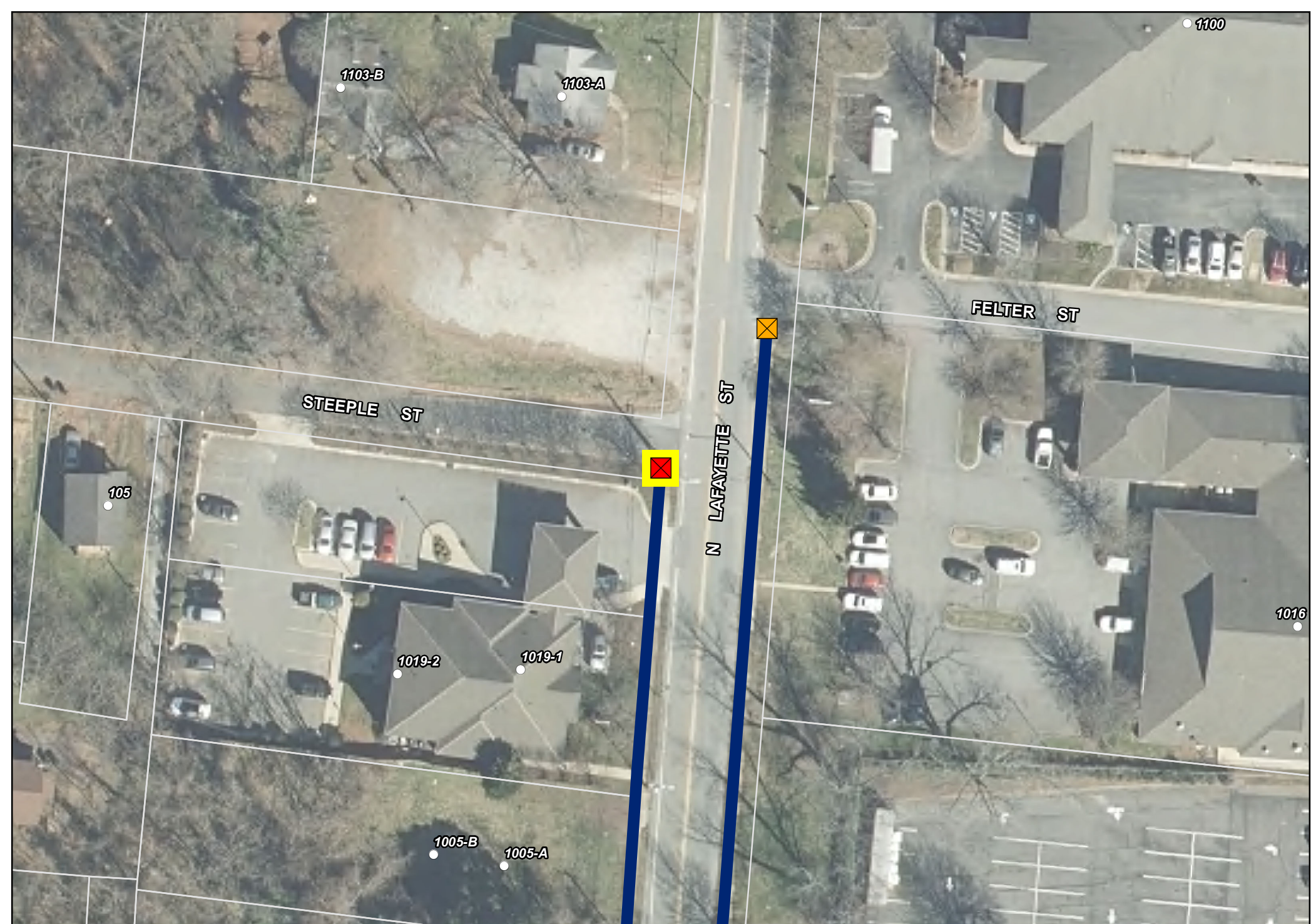
Existing Sidewalk

South Morgan Street and Royster Avenue Ramp Replacement



1 inch = 50 feet
0 12.5 25 50 Feet





Ramp Replacement



Existing Ramp

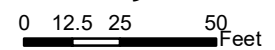


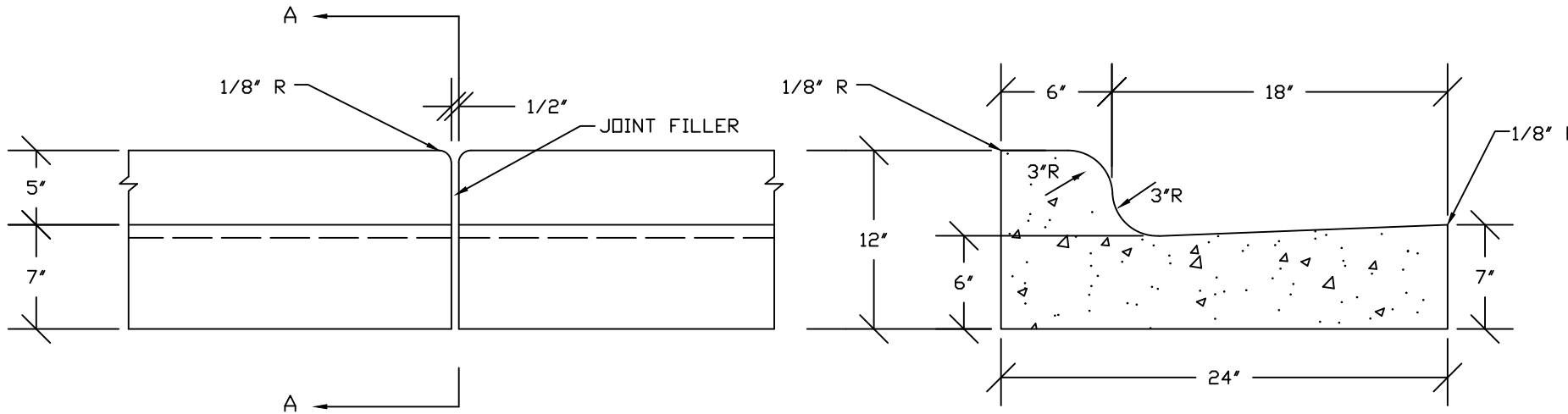
Existing Sidewalk

Steeple Street and North Lafayette Street Ramp Replacement



1 inch = 50 feet





FRONT ELEVATION
TRANVERSE EXPANSION JOINT

SECTION A-A
SIDE ELEVATION

COMBINATION CURB & GUTTER

NOTE:

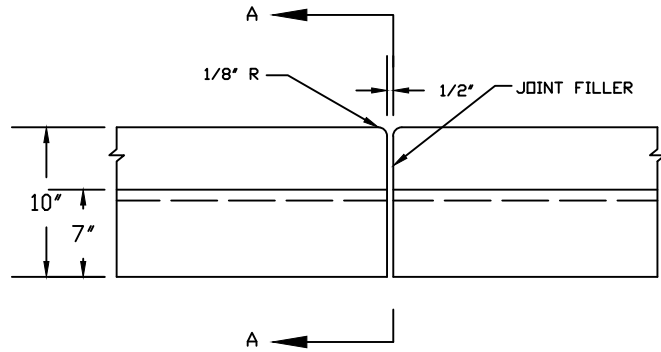
1. CONCRETE SHALL BE A MINIMUM OF 3000 PSI.
2. FOR HAND POURED CURBING, CONTRACTION JOINTS SHALL BE SPACED AT 10' INTERVALS & EXPANSION JOINTS SHALL BE PLACED AT 50' INTERVALS.
3. FOR EXTRUDED CURBING, CONTRACTION JOINTS SHALL BE SPACED AT 15' INTERVALS & EXPANSION JOINTS SHALL BE PLACED AT 90' INTERVALS.
4. FINISH ALL CONCRETE WITH CURING COMPOUND.
5. FOLLOW ALL APPLICABLE ACI REQUIREMENTS.
6. CONSTRUCTION METHODS AND MATERIALS SHALL CONFORM TO NORTH CAROLINA DOT STANDARD SPECIFICATIONS FOR ROADS AND STRUCTURES SECTION 846.

SHELBY STANDARD DETAILS - 2021

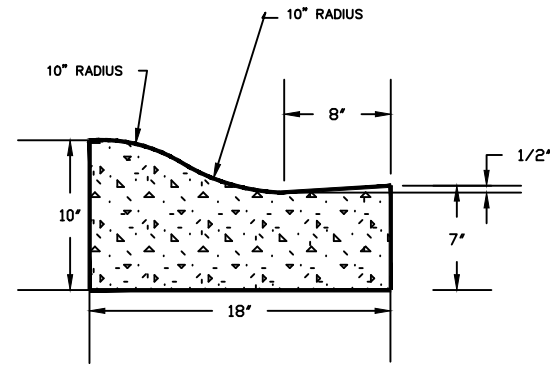
DATE	REVISIONS

STANDARD CONCRETE CURB AND GUTTER

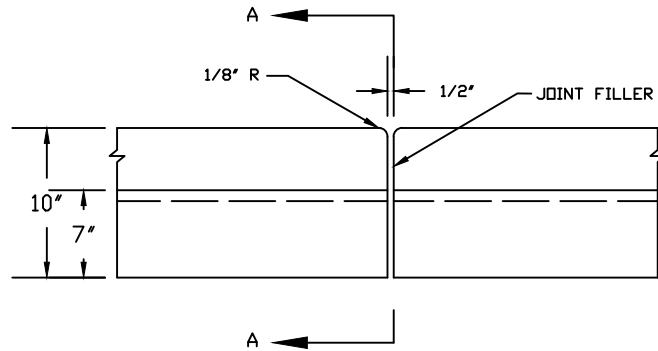




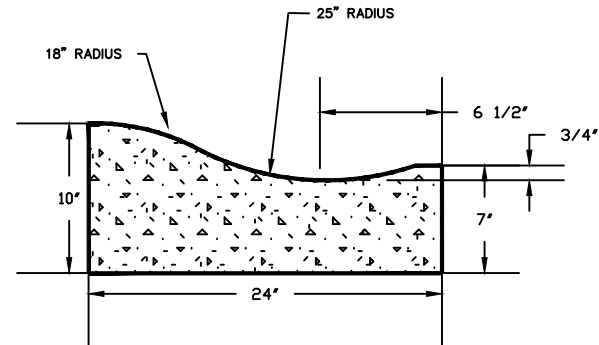
FRONT ELEVATION
TRANVERSE EXPANSION JOINT



SECTION A-A
SIDE ELEVATION



FRONT ELEVATION
TRANVERSE EXPANSION JOINT



SECTION A-A
SIDE ELEVATION

COMBINATION CURB & GUTTER

NOTE:

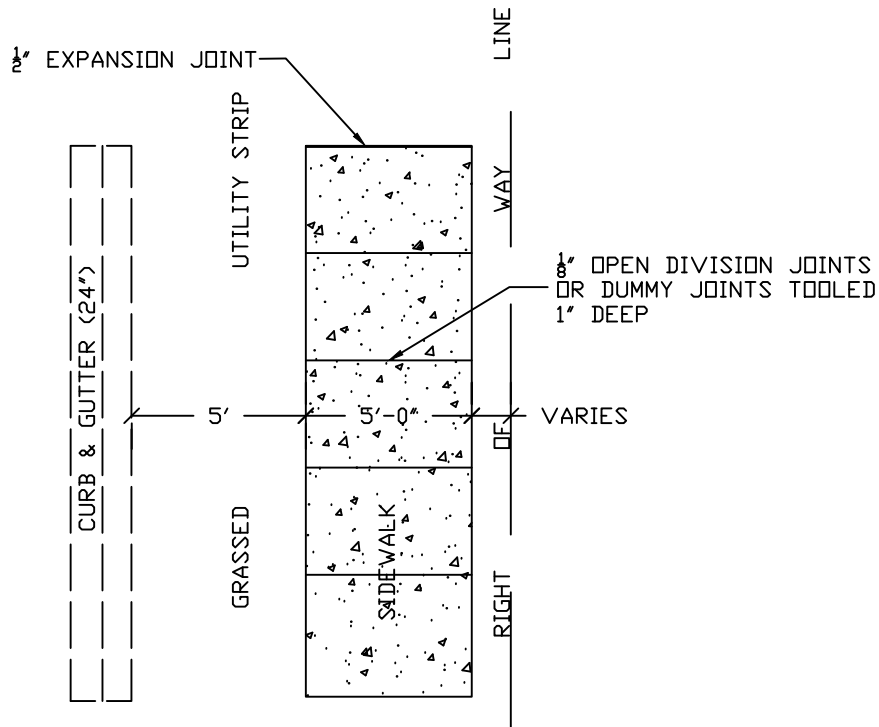
1. CONCRETE SHALL BE A MINIMUM OF 3000 PSI.
2. FOR HAND POURED CURBING, CONTRACTION JOINTS SHALL BE SPACED AT 10' INTERVALS & EXPANSION JOINTS SHALL BE PLACED AT 50' INTERVALS.
3. FOR EXTRUDED CURBING, CONTRACTION JOINTS SHALL BE SPACED AT 15' INTERVALS & EXPANSION JOINTS SHALL BE PLACED AT 90' INTERVALS.
4. FINISH ALL CONCRETE WITH CURING COMPOUND.
5. FOLLOW ALL APPLICABLE ACI REQUIREMENTS.
6. CURB SHALL BE DEPRESSED AT INTERSECTIONS TO PROVIDE FOR FUTURE ACCESSIBLE RAMPS.
7. CURB JOINTS SHALL LINE UP WITH THE JOINTS ON THE ABUTTING SIDEWALK.

SHELBY STANDARD DETAILS - 2021

DATE	REVISIONS

**MOUNTABLE OR VALLEY
CURB AND GUTTER**

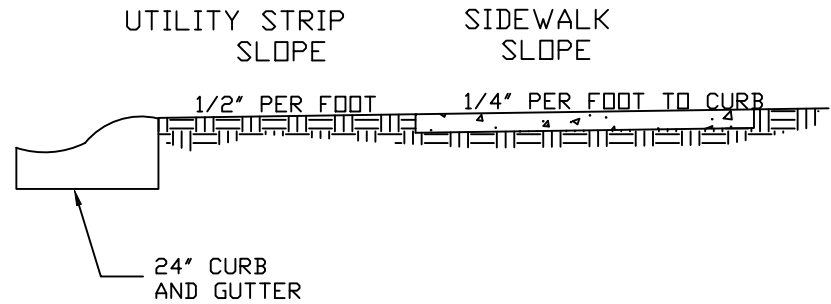




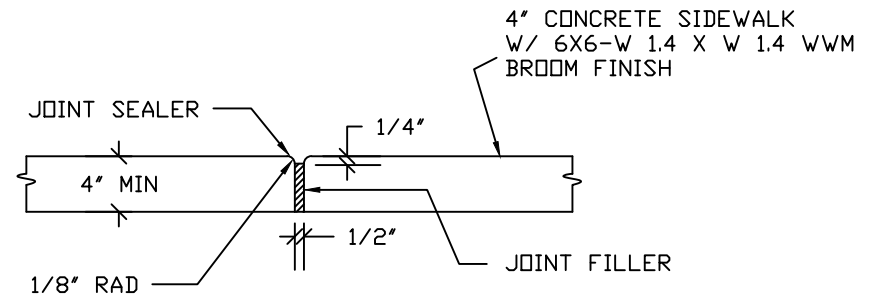
PLAN VIEW

JOINT NOTES:

1. 1/2" EXPANSION JOINTS TO BE LOCATED A MAX. DISTANCE OF 50' APART.
2. 1/8" OPEN DIVISION JOINTS OR DUMMY JOINTS TO BE LOCATED AT 5' INCREMENTS.



TYPICAL SECTION



TRANVERSE EXPANSION JOINT

NOTES:

1. CONCRETE SHALL BE A MINIMUM OF 3000 PSI.
2. TRANVERSE EXPANSION JOINTS TO BE A MAXIMUM OF 50'.
3. ALL CONCRETE TO BE FINISHED WITH CURING COMPOUND.
4. ALL CONCRETE SHALL CONFORM TO ALL APPLICABLE REQUIREMENTS OF THE ACI.
5. SHALL MEET ADA REQUIREMENTS
6. WHEN FRONT EDGE OF WALK IS POURED ADJACENT TO CURB OR BACK OF WALK IS POURED ADJACENT TO A BUILDING OR EXISTING CONCRETE, A 1/2" EXPANSION JOINT SHALL BE PLACED BETWEEN THE NEW WALK AND EXISTING STRUCTURES.
7. WHERE A DRIVEWAY CROSSES A WALK, THE SIDEWALK SHALL HAVE A DEPTH OF 6" WITH 1/2" EXPANSION JOINT EACH SIDE OF WALK.
8. CONSTRUCTION METHODS AND MATERIALS SHALL CONFORM TO NORTH CAROLINA DOT STANDARD SPECIFICATIONS FOR ROAD AND STRUCTURES

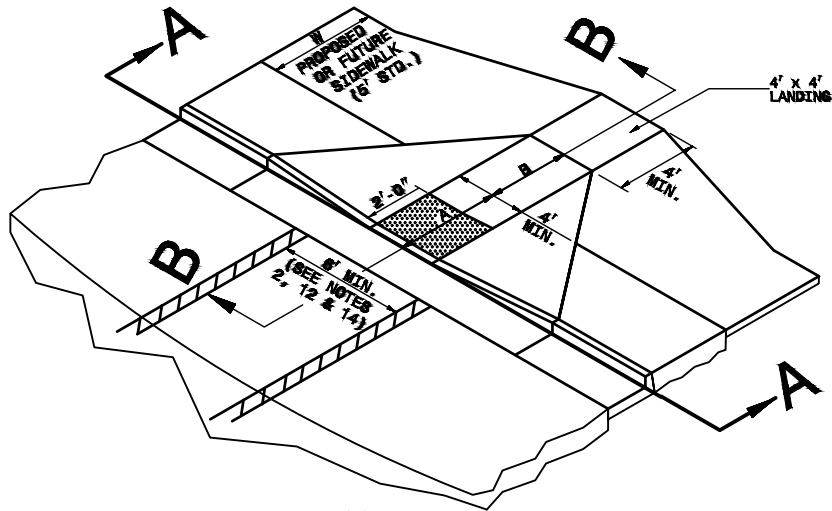
SHELBY STANDARD DETAILS - 2021

DATE	REVISIONS

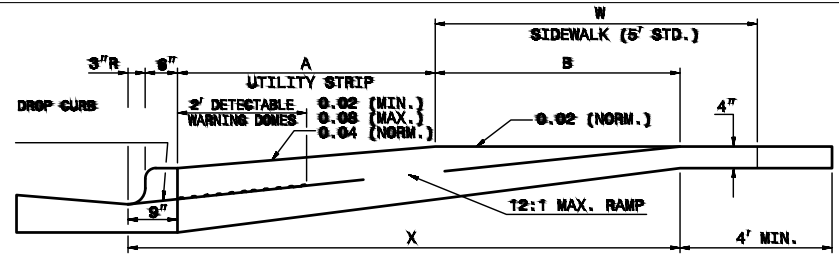
STANDARD CONCRETE SIDEWALK



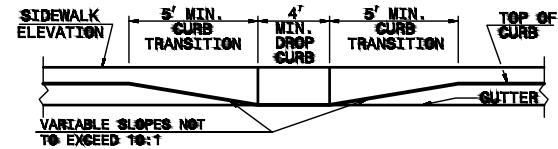
2.05



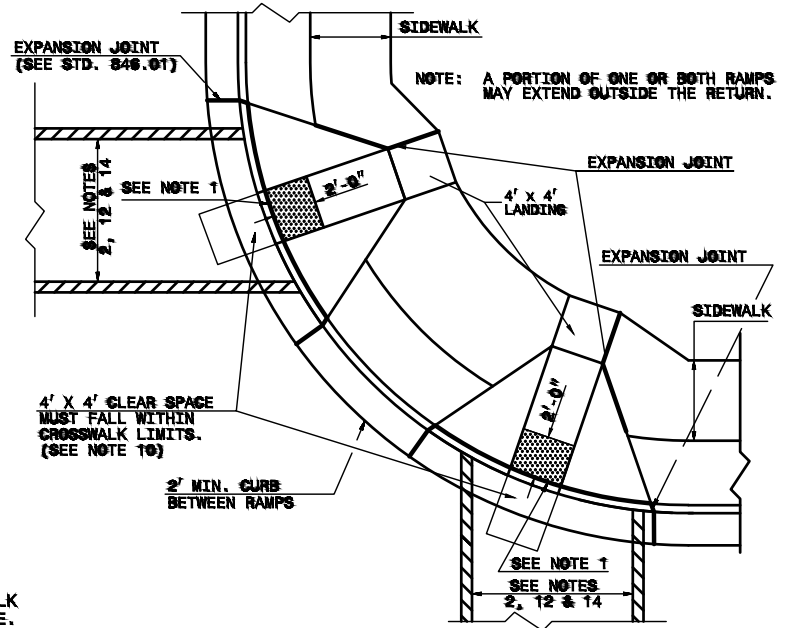
ISOMETRIC VIEW



SECTION B-B



SECTION A-A



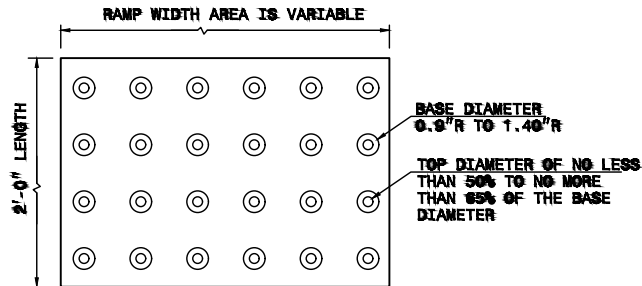
PLAN VIEW

DUAL RAMPS
ANY RADII
(4' MIN. FLOOR WIDTH)

PAY LIMITS FOR CURB RAMP

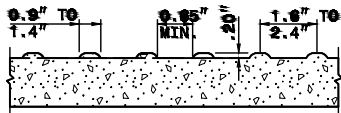
NOTES:

1. DETECTABLE WARNING DOMES WILL COVER 2'-0" LENGTH AND FULL WIDTH OF THE RAMP FLOOR AS SHOWN ON THE DETAILS.
2. DETECTABLE WARNING DOMES WILL CONTRAST VISIBILITY WITH ADJOINING SURFACE, EITHER LIGHT-ON-DARK, OR DARK-ON-LIGHT SEQUENCE COVERING THE ENTIRE RAMP.



W	A	W+A+9"	X	B
5'	0.0'	5.8'	5.8'	5.0'*
6'	0.0'	6.8'	6.8'	6.0'**
7'	0.0'	7.8'	7.3'	6.5'**
8'	0.0'	8.8'	7.3'	6.5'**
5'	2.0'	7.8'	7.8'	5.0'
5'	2.5'	8.3'	8.1'	4.8'
5'	3.0'	8.8'	8.3'	4.4'
5'	3.5'	9.3'	8.4'	4.1'
5'	4.0'	9.8'	8.6'	3.8'
5'	4.5'	10.3'	8.7'	3.4'
5'	5.0'	10.8'	8.9'	3.1'

$B = X - (A + 9")$
 B = DISTANCE FROM FRONT EDGE OF SIDEWALK TO BACK POINT OF 12:1 (8.33%) SLOPE.
 * BACK OF SIDEWALK DROP REQUIRED FOR ALL SIDEWALK SLOPES.
 ** BACK OF SIDEWALK DROP REQUIRED FOR SIDEWALK SLOPES 0.04.



DETECTABLE WARNING DOMES

NOTE: ALL CONSTRUCTION SHALL MEET CURRENT ADA STANDARDS

SHELBY STANDARD DETAILS - 2021

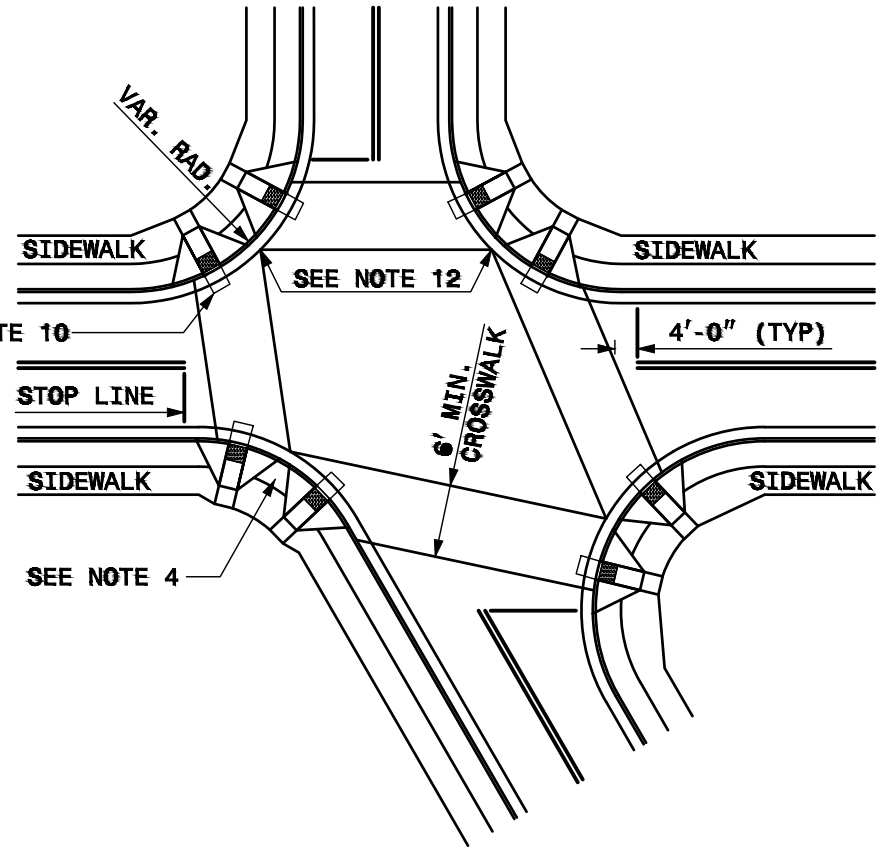
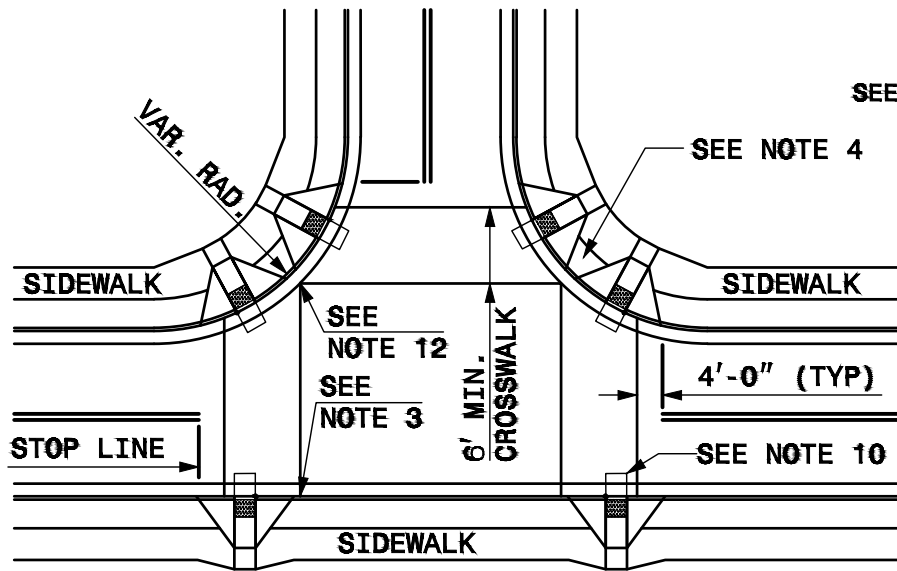
DATE	REVISIONS

**STANDARD WHEELCHAIR RAMP
(DETAIL 1 OF 3)**



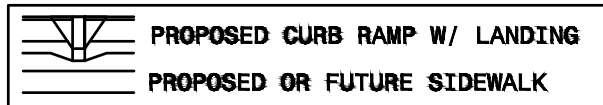
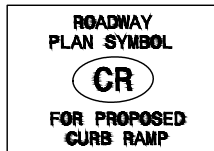
2.06A

SHEET 1 OF 3



DETAIL SHOWING TYPICAL LOCATION OF CURB RAMPS, PEDESTRIAN CROSSWALKS AND STOP LINES FOR TEE INTERSECTIONS

DETAIL SHOWING TYPICAL LOCATION OF CURB RAMPS, PEDESTRIAN CROSSWALKS AND STOP LINES



ALLOWABLE LOCATIONS
DUAL RAMP RADII.....ANY

SHELBY STANDARD DETAILS - 2021

DATE	REVISIONS

**STANDARD WHEELCHAIR RAMP
(DETAIL 2 OF 3)**



2.06B

SHEET 2 OF 3

1. CONSTRUCT THE RAMP SURFACE TO BE STABLE, FIRM, AND SLIP RESISTANT. CONSTRUCT THE CURB RAMP TYPE AS SHOWN IN THE PAVEMENT MARKING PLANS OR AS DIRECTED BY THE ENGINEER.
2. LOCATE CURB RAMPS AND PLACE PEDESTRIAN CROSSWALK MARKINGS AS SHOWN IN THE PAVEMENT MARKING PLANS. WHEN FIELD ADJUSTMENTS REQUIRE MOVING CURB RAMPS OR MARKINGS AS SHOWN, CONTACT THE SIGNING AND DELINEATION UNIT OR LOCATE AS DIRECTED BY THE ENGINEER.
3. COORDINATE THE CURB RAMP AND THE PEDESTRIAN CROSSWALK MARKINGS SO A 4'x4' CLEAR SPACE AT THE BASE OF THE CURB RAMP WILL FALL WITHIN THE PEDESTRIAN CROSSWALK LINES.
4. SET BACK DISTANCE FROM INSIDE CROSSWALK MARKING TO NEAREST EDGE OF TRAVEL LANE IS 4' MINIMUM.
5. REFER TO THE PAVEMENT MARKING STANDARDS FOR STOP BAR LOCATIONS AT SIGNALIZED INTERSECTIONS.
6. TERMINATE PARKING A MINIMUM OF 20' BACK OF A PEDESTRIAN CROSSWALK.
7. CONSTRUCT CURB RAMPS A MINIMUM OF 4' WIDE.
8. CONSTRUCT THE RUNNING SLOPE OF THE RAMP 8.33% MAXIMUM.
9. ALLOWABLE CROSS SLOPE ON SIDEWALKS AND CURB RAMPS WILL BE 2% MAXIMUM.
10. CONSTRUCT THE SIDE FLARE SLOPE A MAXIMUM OF 10% MEASURED ALONG THE CURB LINE.
11. CONSTRUCT THE COUNTER SLOPE OF THE GUTTER OR STREET AT THE BASE OF THE CURB RAMP A MAXIMUM OF 5% AND MAINTAIN A SMOOTH TRANSITION.
12. CONSTRUCT LANDINGS FOR SIDEWALK A MINIMUM OF 4'x4' WITH A MAXIMUM SLOPE OF 2% IN ANY DIRECTION. CONSTRUCT LANDINGS FOR MEDIAN ISLANDS A MINIMUM OF 5'x5' WITH A MAXIMUM SLOPE OF 2% IN ANY DIRECTION.
13. TO USE A MEDIAN ISLAND AS A PEDESTRIAN REFUGE AREA, MEDIAN ISLANDS WILL BE A MINIMUM OF 6' WIDE. CONSTRUCT MEDIAN ISLANDS TO PROVIDE PASSAGE OVER OR THROUGH THE ISLAND.
14. SMALL CHANNELIZATION ISLANDS THAT CAN NOT PROVIDE A 5'x5' LANDING AT THE TOP OF A RAMPS, WILL BE CUT THROUGH LEVEL WITH THE SURFACE STREET.
15. CURB RAMPS WITH RETURNED CURBS MAY BE USED ONLY WHERE PEDESTRIANS WOULD NOT NORMALLY WALK ACROSS THE RAMP. THE ADJACENT SURFACE IS PLANTING OR OTHER NON-WALKING SURFACE OR THE SIDE APPROACH IS SUBSTANTIALLY OBSTRUCTED.
16. PLACE A 1/2" EXPANSION JOINT WHERE THE CONCRETE CURB RAMP JOINS THE CURB AS SHOWN IN ROADWAY STANDARD DRAWING 848.01
17. PLACE ALL PEDESTRIAN PUSH BUTTON ACTUATORS AND CROSSING SIGNALS AS SHOWN IN THE PLANS OR AS SHOWN IN THE MUTCD.
18. CURB RAMPS THROUGH MEDIAN ISLANDS, SINGLE RAMPS AT DUAL CROSSWALKS OR LIMITED R/W SITUATIONS, WILL BE HANDLED BY SPECIAL DETAILS. CONTACT THE CONTRACT STANDARDS AND DEVELOPMENT UNIT FOR THE DETAILS OR FOR A SPECIAL DESIGN.

SHELBY STANDARD DETAILS - 2021

DATE	REVISIONS

**STANDARD WHEELCHAIR RAMP
(DETAIL 3 OF 3)**



2.06C

SHEET 3 OF 3