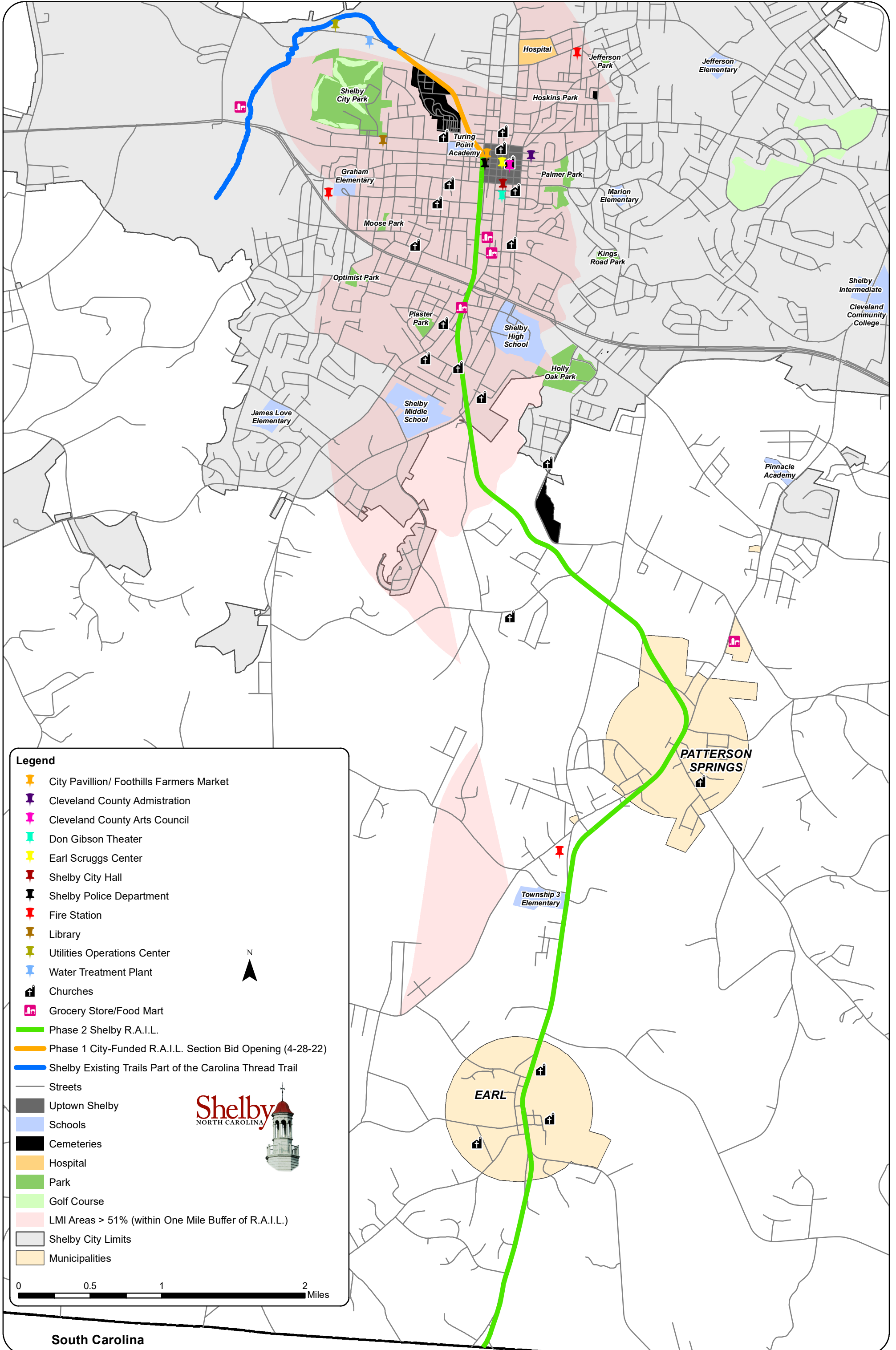


## Maps

- Shelby R.A.I.L. Overview
- LMI Neighborhoods
- LMI Access to Jobs
- Medical Facilities and Doctors
- R.A.I.L. Connectivity to Existing Infrastructure
- Race Demographics in the Project Area
- Poverty Rate in the Project Area
- Unemployment Rate in the Project Area
- No Highschool Diploma in the Project Area
- Zero-Vehicle Households in the Project Area
- Bike and Pedestrian Crashes in the Project Area
- Historically Disadvantaged Communities
- Connections to Opportunity Zone

# Shelby Regional Access Improvement Line (R.A.I.L.)



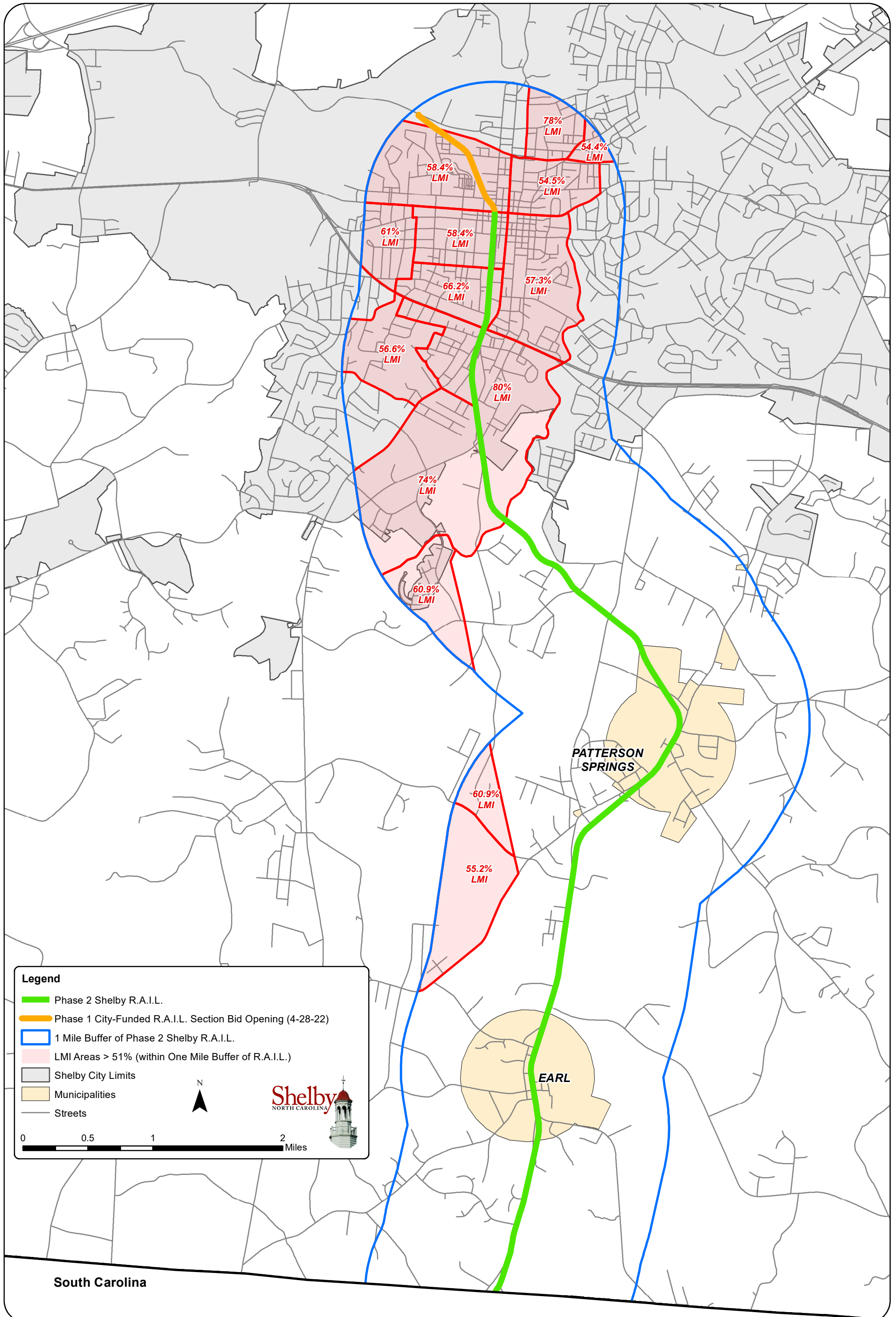
**Legend**

- City Pavillion/ Foothills Farmers Market
- Cleveland County Admiration
- Cleveland County Arts Council
- Don Gibson Theater
- Earl Scruggs Center
- Shelby City Hall
- Shelby Police Department
- Fire Station
- Library
- Utilities Operations Center
- Water Treatment Plant
- Churches
- Grocery Store/Food Mart
- Phase 2 Shelby R.A.I.L.
- Phase 1 City-Funded R.A.I.L. Section Bid Opening (4-28-22)
- Shelby Existing Trails Part of the Carolina Thread Trail
- Streets
- Uptown Shelby
- Schools
- Cemeteries
- Hospital
- Park
- Golf Course
- LMI Areas > 51% (within One Mile Buffer of R.A.I.L.)
- Shelby City Limits
- Municipalities

0 0.5 1 2 Miles

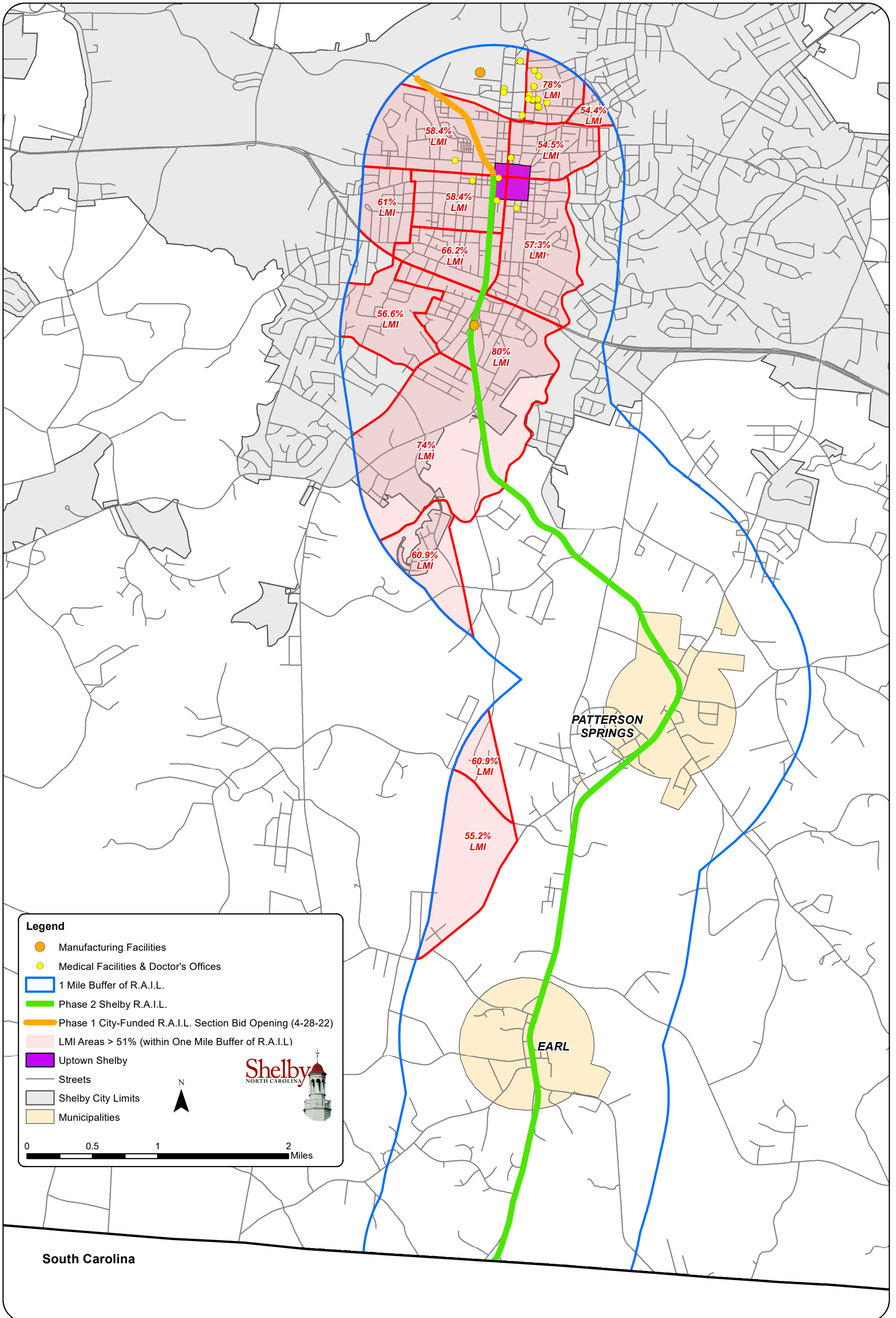
**Shelby**  
NORTH CAROLINA

# Shelby Regional Access Improvement Line (R.A.I.L.) Low & Moderate Income Households





# Shelby Regional Access Improvement Line (R.A.I.L.) LMI Access to Jobs



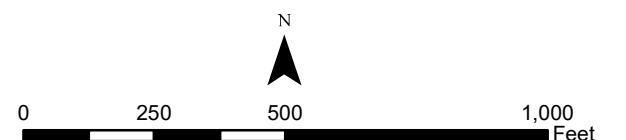


# Shelby Regional Access Improvement Line (R.A.I.L.) Medical Facilities & Doctor's Offices

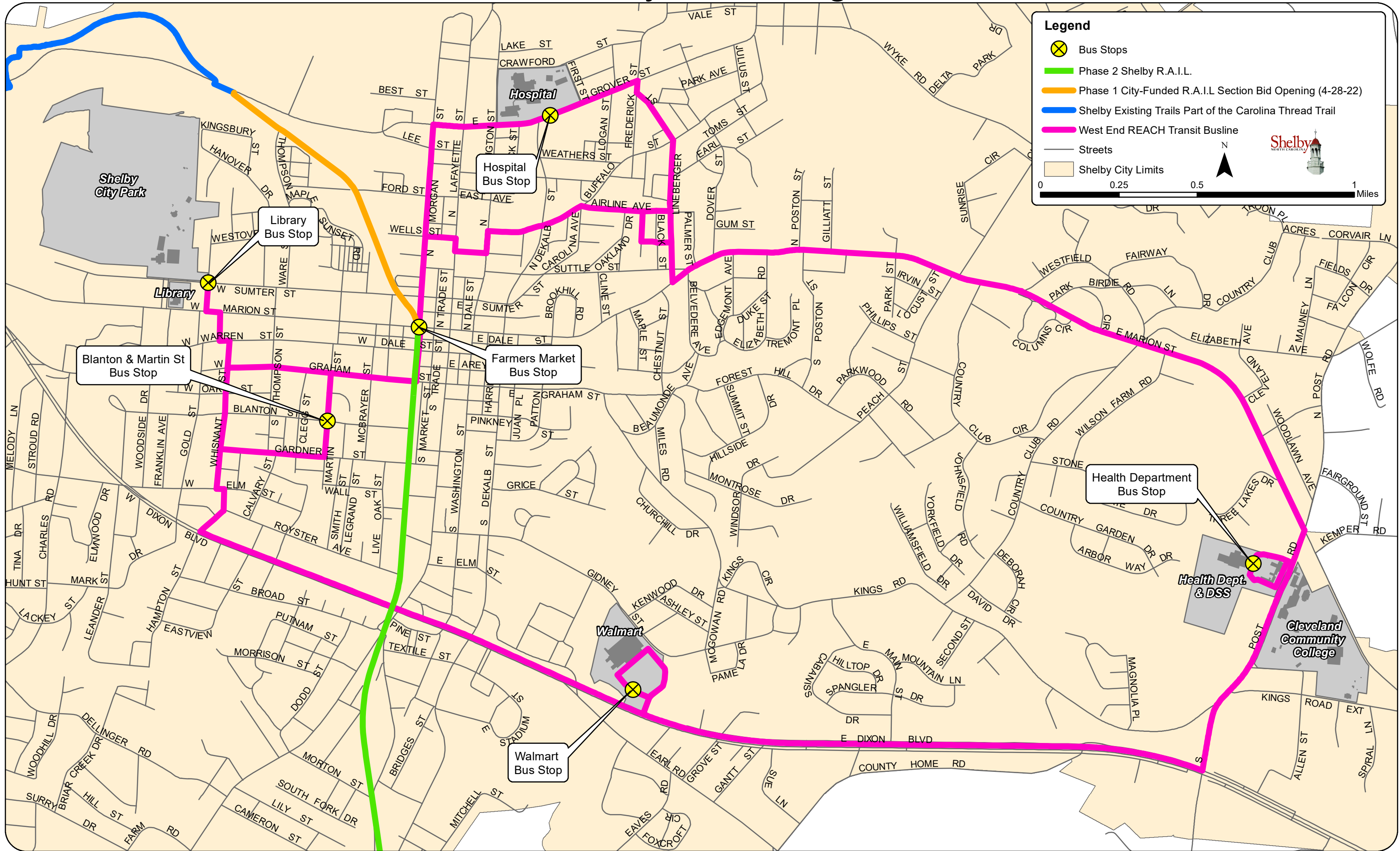


## Legend

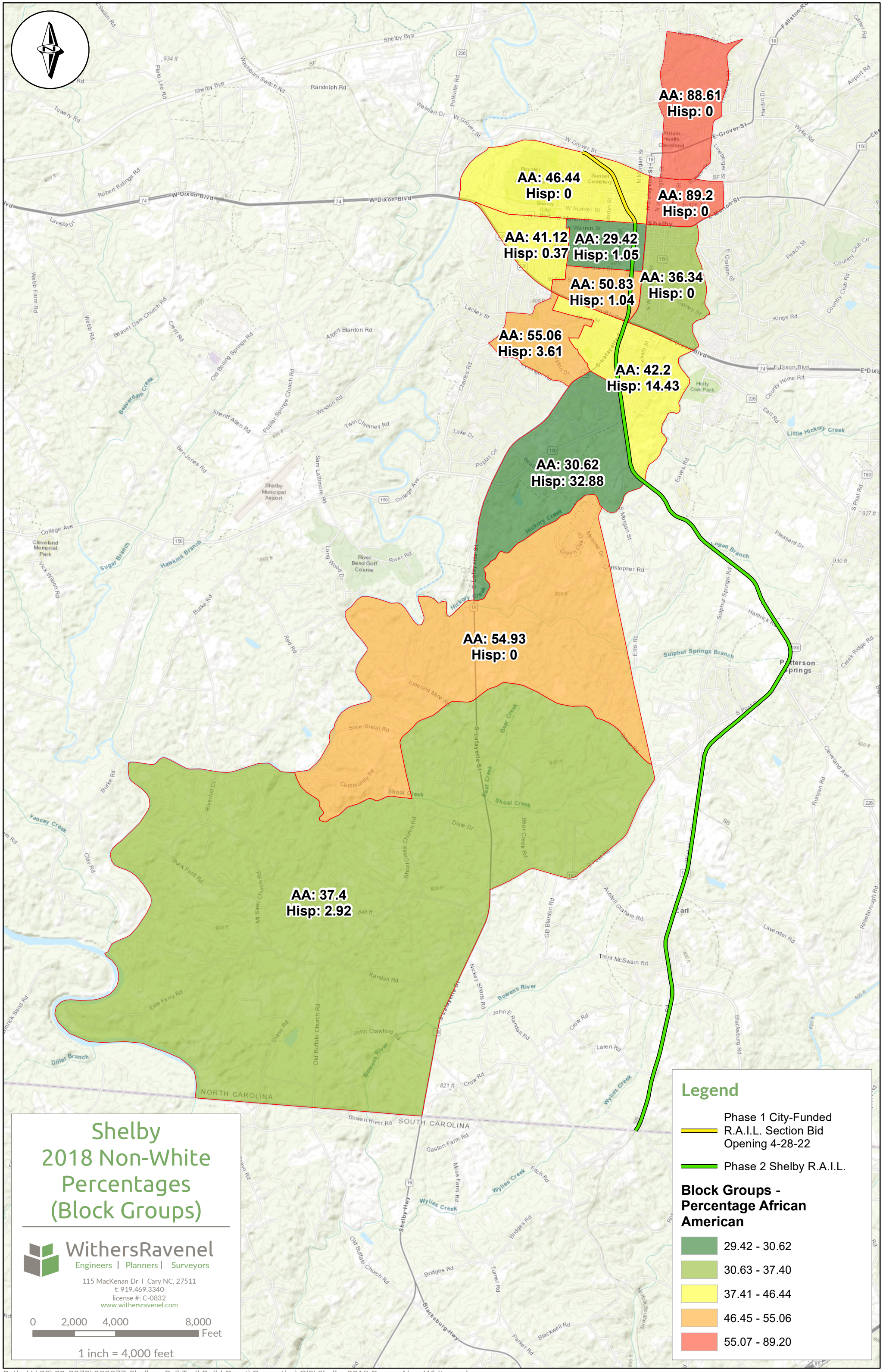
- █ Shelby R.A.I.L.
- Medical Facilities & Doctor's Offices
- Hospital
- Streets



# R.A.I.L. Connectivity to Existing Infrastructure







AA: 88.61  
Hisp: 0

AA: 46.44  
Hisp: 0

AA: 89.2  
Hisp: 0

AA: 41.12  
Hisp: 0.37

AA: 29.42  
Hisp: 1.05

AA: 50.83  
Hisp: 1.04

AA: 36.34  
Hisp: 0

AA: 55.06  
Hisp: 3.61

AA: 42.2  
Hisp: 14.43

AA: 30.62  
Hisp: 32.88

AA: 54.93  
Hisp: 0

AA: 37.4  
Hisp: 2.92

**Legend**

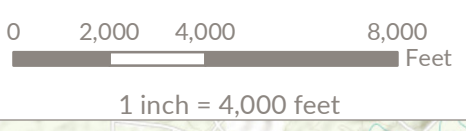
- Phase 1 City-Funded R.A.I.L. Section Bid Opening 4-28-22
- Phase 2 Shelby R.A.I.L.

**Block Groups - Percentage African American**

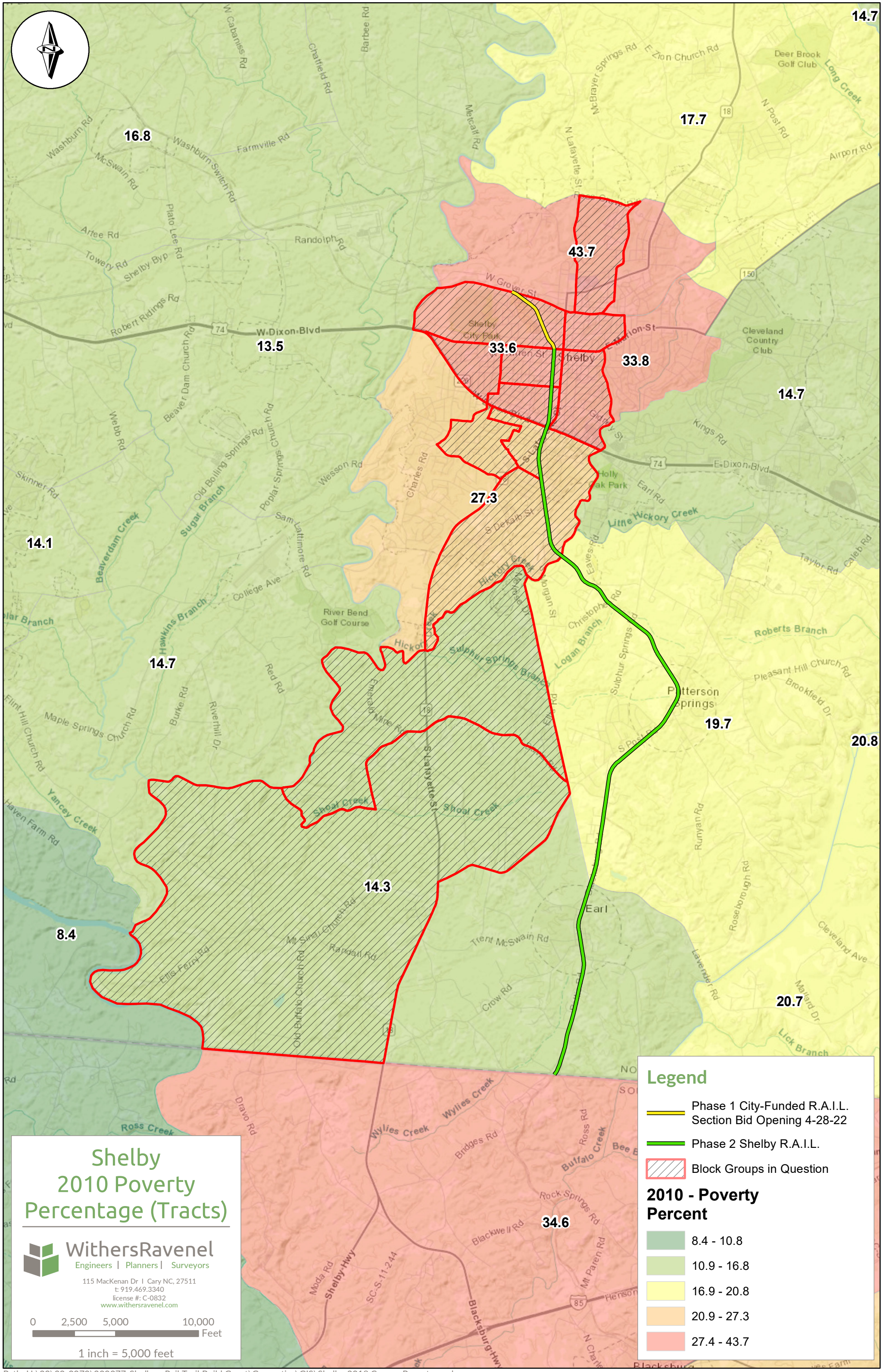
- 29.42 - 30.62
- 30.63 - 37.40
- 37.41 - 46.44
- 46.45 - 55.06
- 55.07 - 89.20

**Shelby  
2018 Non-White  
Percentages  
(Block Groups)**

**WithersRavenel**  
Engineers | Planners | Surveyors  
115 MacKenan Dr | Cary NC, 27511  
t: 919.469.3340  
license #: C-0832  
www.withersravenel.com







**Shelby  
2010 Poverty  
Percentage (Tracts)**

**WithersRavenel**  
Engineers | Planners | Surveyors

115 MacKean Dr | Cary NC, 27511  
t: 919.469.3340  
license #: C-0832  
www.withersravenel.com

0 2,500 5,000 10,000 Feet  
1 inch = 5,000 feet

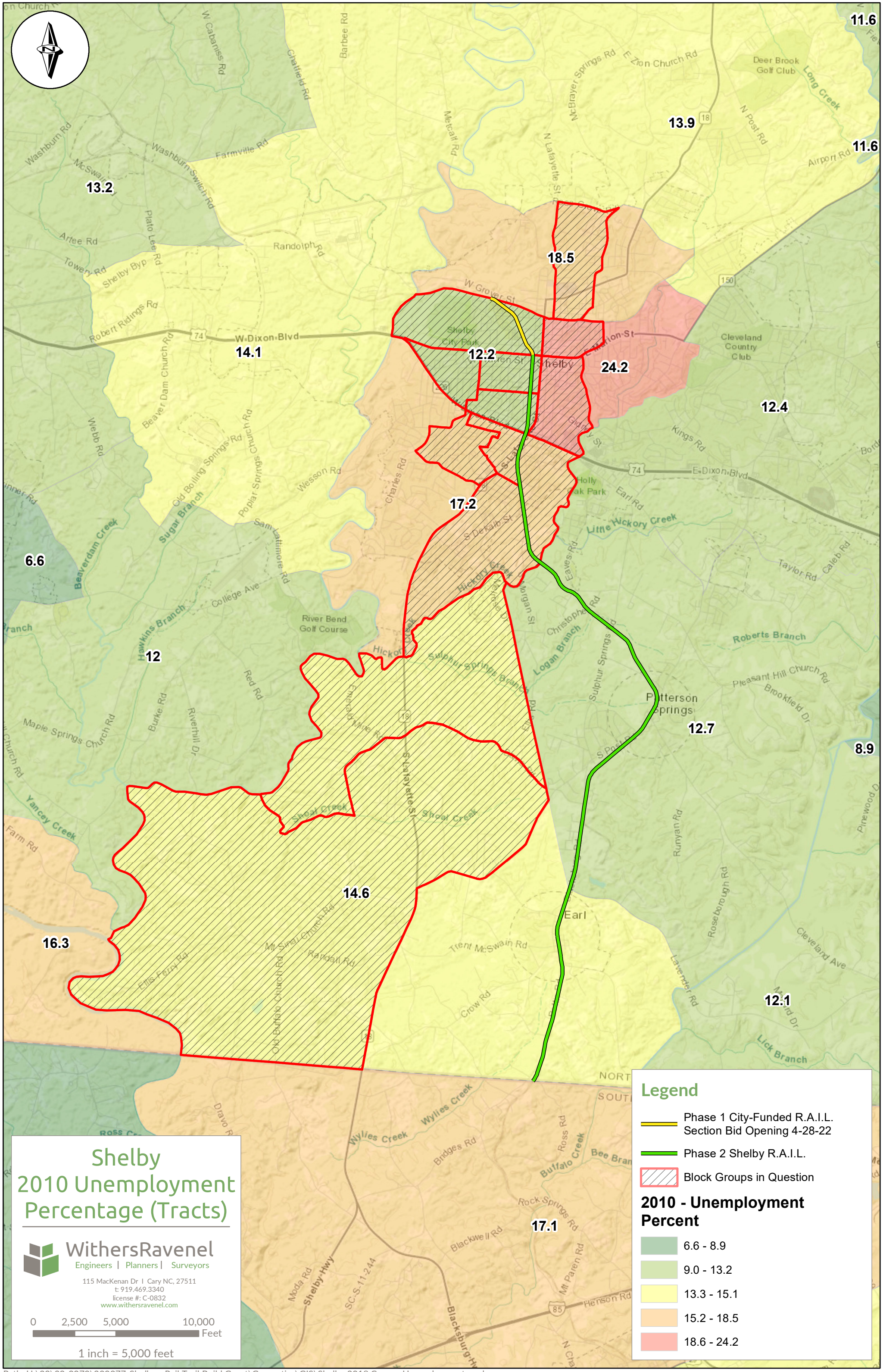
**Legend**

- Phase 1 City-Funded R.A.I.L. Section Bid Opening 4-28-22
- Phase 2 Shelby R.A.I.L.
- Block Groups in Question

**2010 - Poverty Percent**

- 8.4 - 10.8
- 10.9 - 16.8
- 16.9 - 20.8
- 20.9 - 27.3
- 27.4 - 43.7





**Shelby**  
**2010 Unemployment Percentage (Tracts)**

**WithersRavenel**  
 Engineers | Planners | Surveyors

115 MacKenan Dr | Cary NC, 27511  
 t: 919.469.3340  
 license #: C-0832  
 www.withersravenel.com

0 2,500 5,000 10,000 Feet  
 1 inch = 5,000 feet

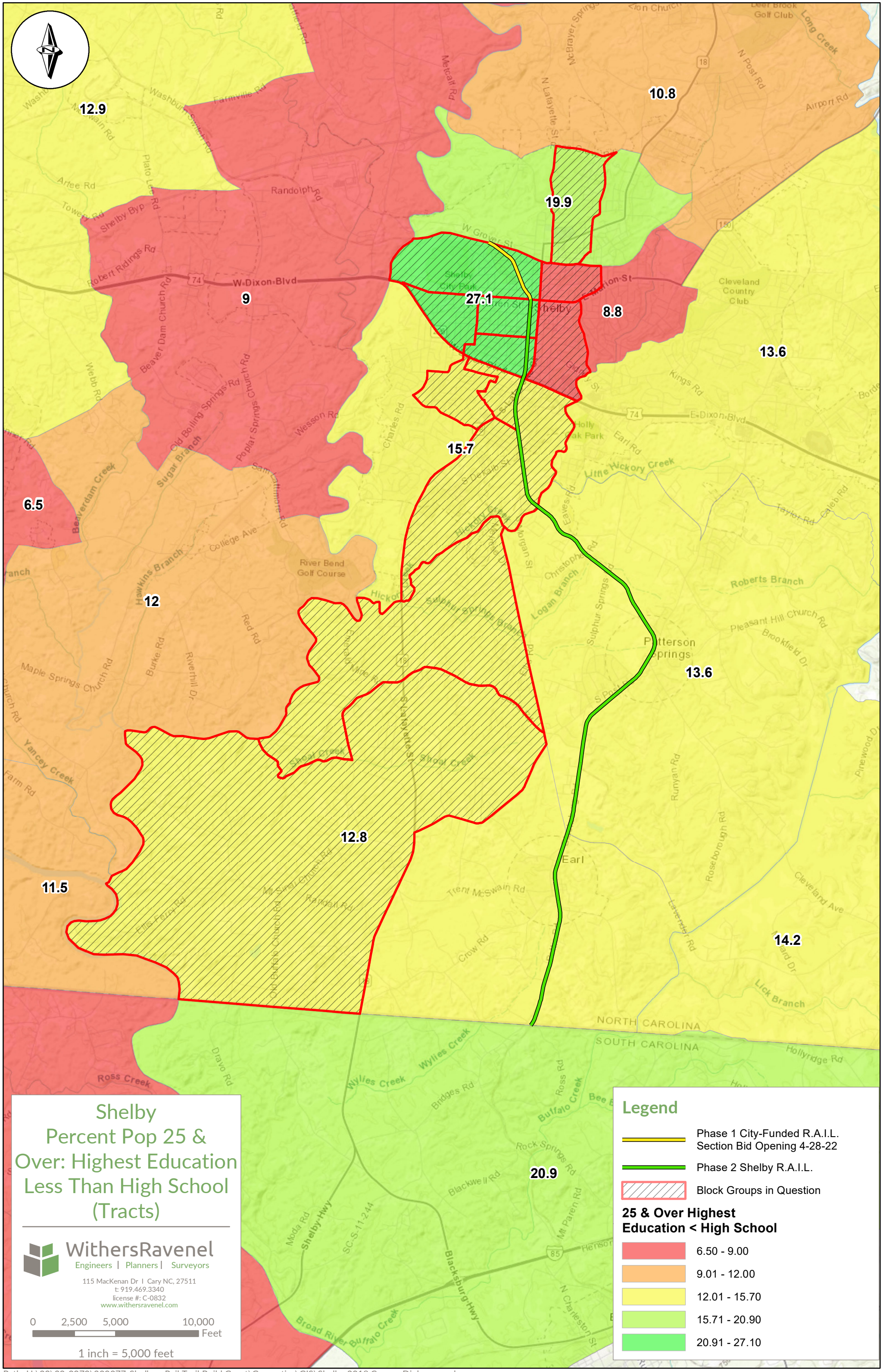
**Legend**

- Phase 1 City-Funded R.A.I.L. Section Bid Opening 4-28-22
- Phase 2 Shelby R.A.I.L.
- Block Groups in Question

**2010 - Unemployment Percent**

- 6.6 - 8.9
- 9.0 - 13.2
- 13.3 - 15.1
- 15.2 - 18.5
- 18.6 - 24.2





**Shelby**  
**Percent Pop 25 & Over: Highest Education Less Than High School (Tracts)**

---

**WithersRavenel**  
 Engineers | Planners | Surveyors

115 MacKenan Dr | Cary NC, 27511  
 t: 919.469.3340  
 license #: C-0832  
 www.withersravenel.com

0 2,500 5,000 10,000 Feet  
 1 inch = 5,000 feet

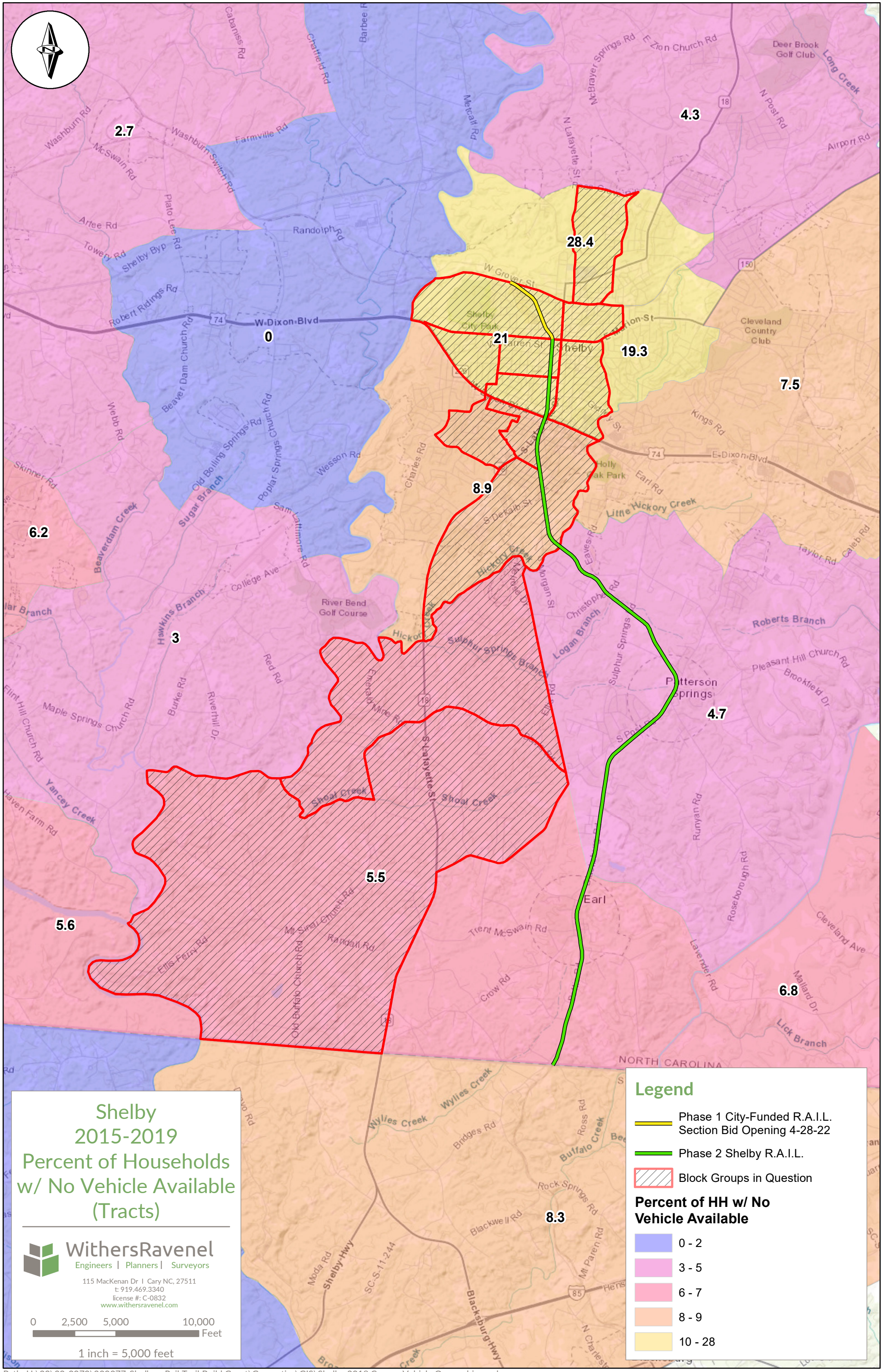
**Legend**

- Phase 1 City-Funded R.A.I.L. Section Bid Opening 4-28-22
- Phase 2 Shelby R.A.I.L.
- Block Groups in Question

**25 & Over Highest Education < High School**

- 6.50 - 9.00
- 9.01 - 12.00
- 12.01 - 15.70
- 15.71 - 20.90
- 20.91 - 27.10





**Shelby  
2015-2019  
Percent of Households  
w/ No Vehicle Available  
(Tracts)**

**WithersRavenel**  
Engineers | Planners | Surveyors

115 MacKenan Dr | Cary NC, 27511  
t: 919.469.3340  
license #: C-0832  
www.withersravenel.com

0 2,500 5,000 10,000 Feet  
1 inch = 5,000 feet

**Legend**

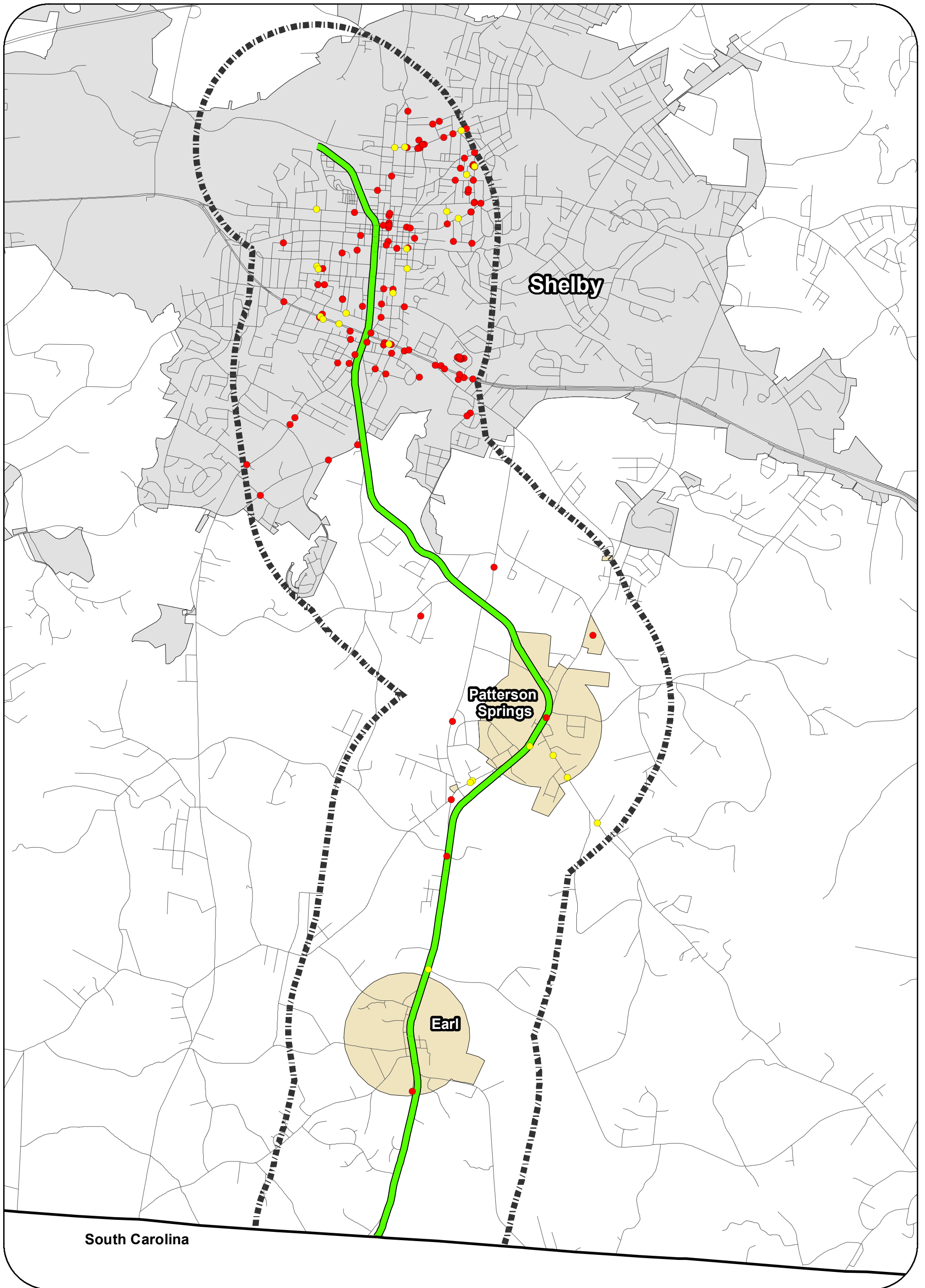
- Phase 1 City-Funded R.A.I.L. Section Bid Opening 4-28-22
- Phase 2 Shelby R.A.I.L.
- Block Groups in Question

**Percent of HH w/ No Vehicle Available**

- 0 - 2
- 3 - 5
- 6 - 7
- 8 - 9
- 10 - 28

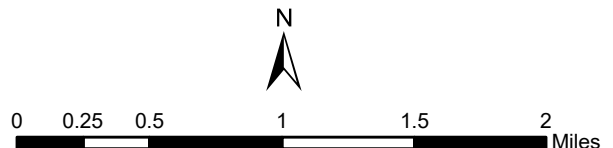


# Pedestrian and Bicycle Crashes, 2007-2019

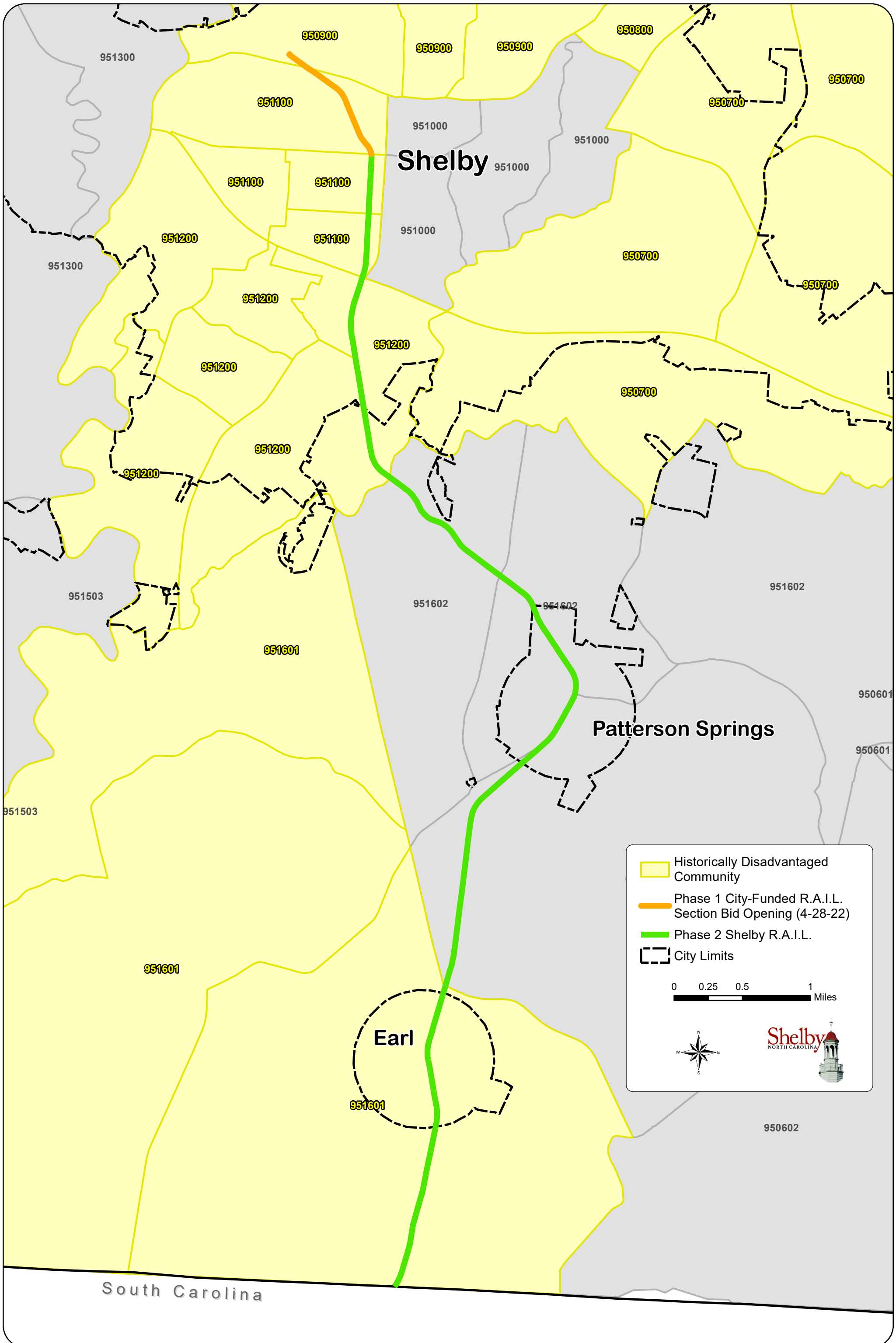


**Legend**

- Pedestrian Crashes (114 Total)
- Bicycle Crashes (25 Total)
- Rail Trail Corridor
- 1 Mile Buffer from Rail Trail Corridor
- Shelby City Limits
- Municipalities

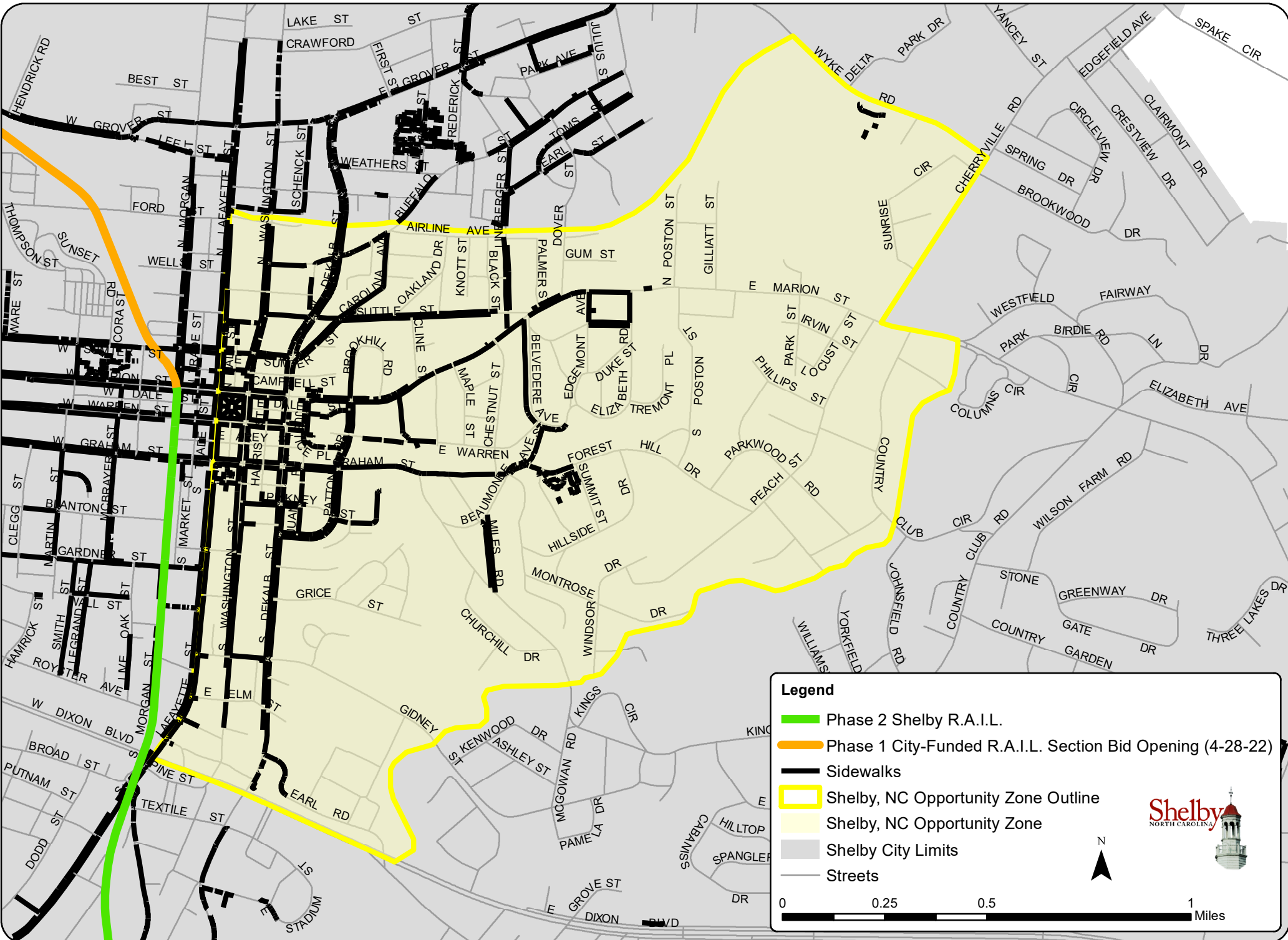


# Historically Disadvantaged Communities

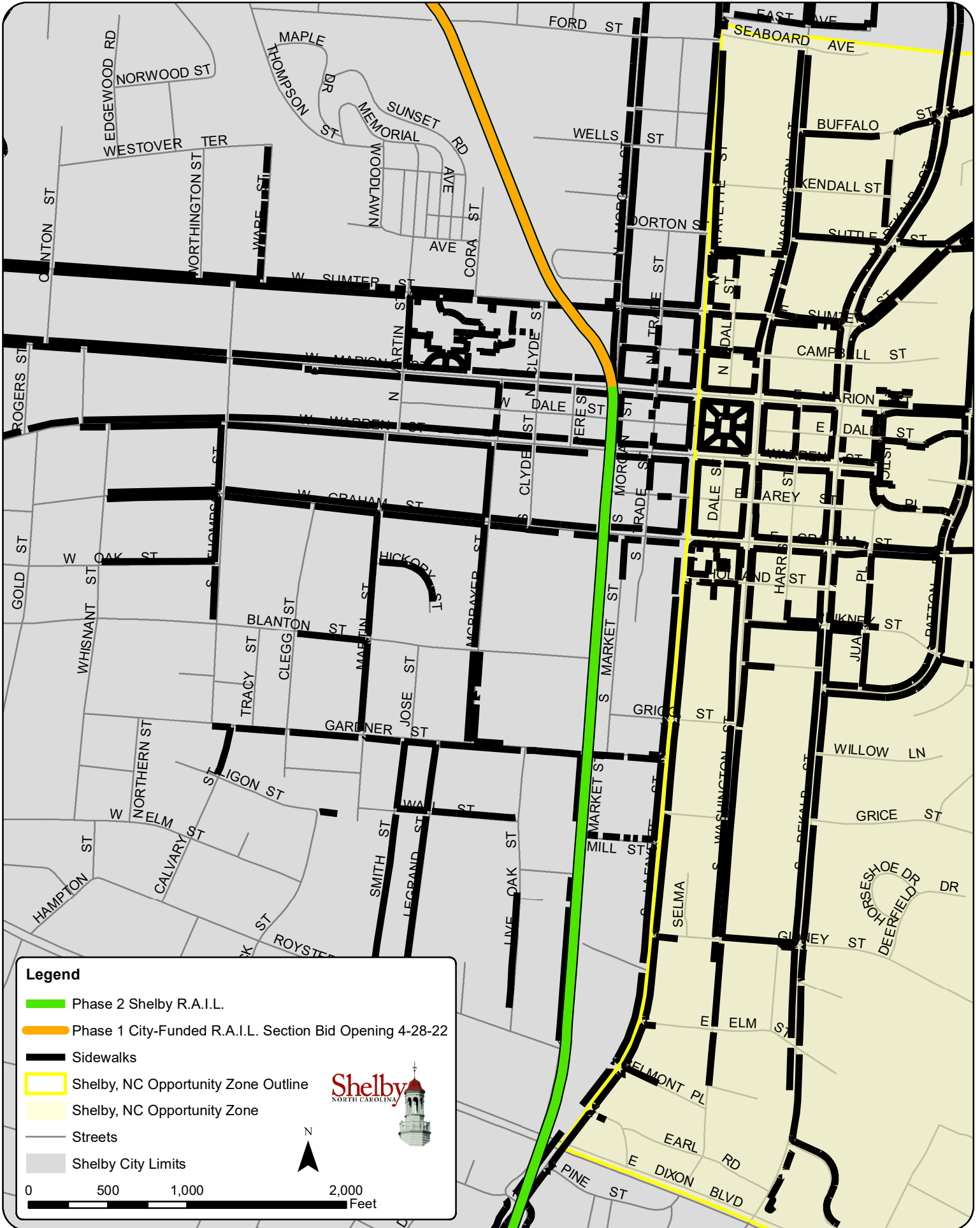




# R.A.I.L. Connectivity - Shelby, NC Opportunity Zone




# R.A.I.L. Connectivity - Shelby, NC Opportunity Zone



**Legend**

- Phase 2 Shelby R.A.I.L.
- Phase 1 City-Funded R.A.I.L. Section Bid Opening 4-28-22
- Sidewalks
- Shelby, NC Opportunity Zone Outline
- Shelby, NC Opportunity Zone
- Streets
- Shelby City Limits


  
 0      500      1,000      2,000
   
 Feet