

**NOTES:**

1. ALL GREASE INTERCEPTORS SHALL CONFORM TO CHAPTER 10, SECTION 1003 OF THE NC PLUMBING CODE.
2. SIZING OF GREASE INTERCEPTORS TO BE DETERMINED BY CITY OF SHELBY CODE OF ORDINANCES: FATS, OILS, AND GREASE CONTROL.
3. ANY VARIANCE FROM THIS DETAIL MUST HAVE PRIOR APPROVAL FROM THE CITY OF SHELBY.
4. GREASE INTERCEPTOR SHALL BE LOCATED AS TO BE ACCESSIBLE FOR CLEANING AND MAINTENANCE.
5. TRAFFIC-RATED INTERCEPTORS ARE REQUIRED WHEN LOCATED IN TRAFFIC AREAS.
6. CONCRETE SHALL BE 4000 PSI @28 DAYS.
7. EARTHCOVER SHALL BE 0' TO 5' MAX.

**SHELBY STANDARD DETAILS - 2021**

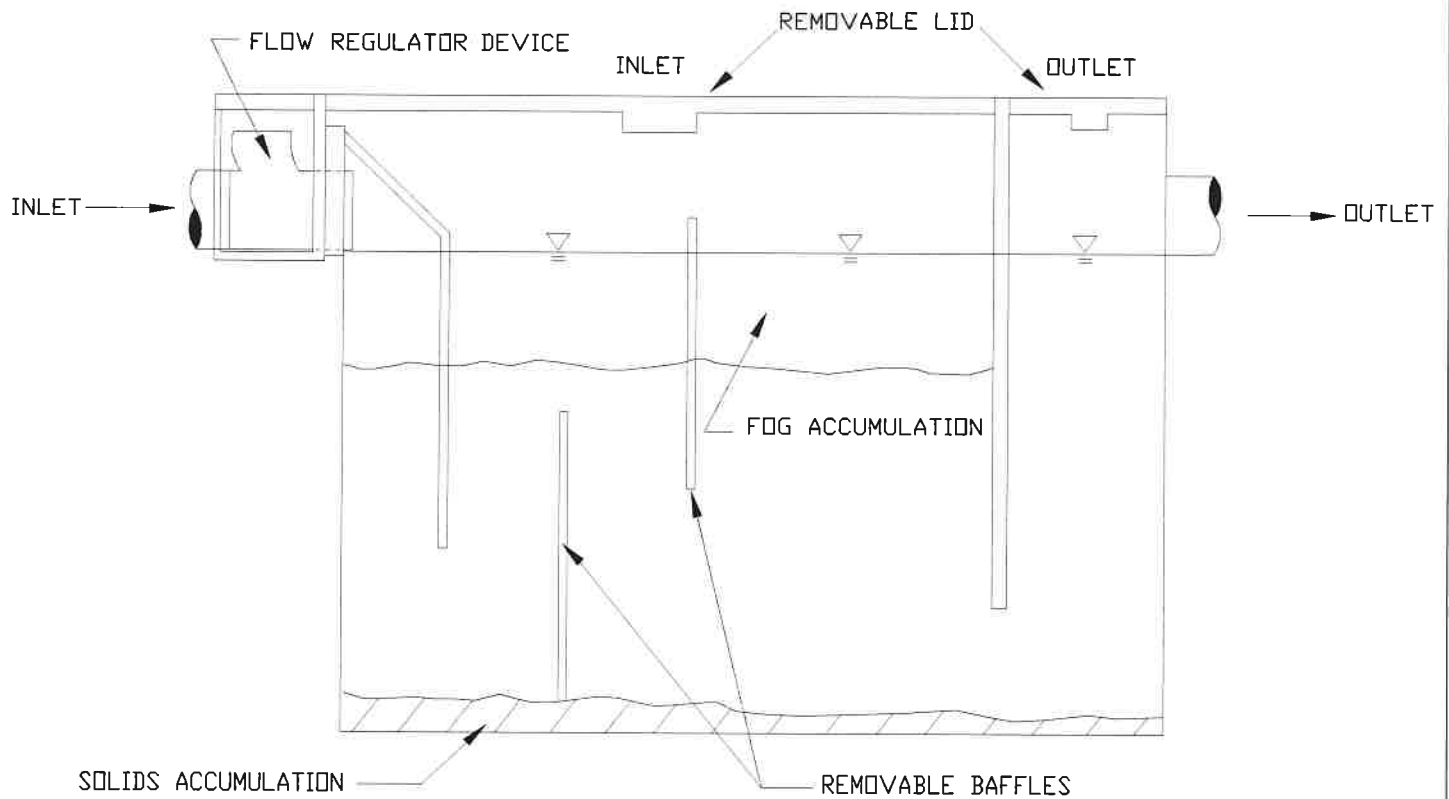
DATE	REVISIONS

**GREASE INTERCEPTOR DETAILS  
AND SPECIFICATIONS -  
OUTSIDE INSTALLATION**



**7.02A**

TYPICAL GREASE TRAP DESIGN (DESIGN WILL VARY BY MANUFACTURER)



NOTES:

1. ALL GREASE TRAPS SHALL CONFORM TO CHAPTER 10, SECTION 1003 OF THE NC PLUMBING CODE.
2. SIZING OF GREASE TRAPS TO BE DETERMINED BY CITY OF SHELBY CODE OF ORDINANCES: FATS, OILS, AND GREASE CONTROL.
3. ANY VARIANCE FROM THIS DETAIL MUST HAVE PRIOR APPROVAL FROM THE CITY OF SHELBY.
4. GREASE TRAP SHALL BE LOCATED AS TO BE ACCESSIBLE FOR CLEANING AND MAINTENANCE.

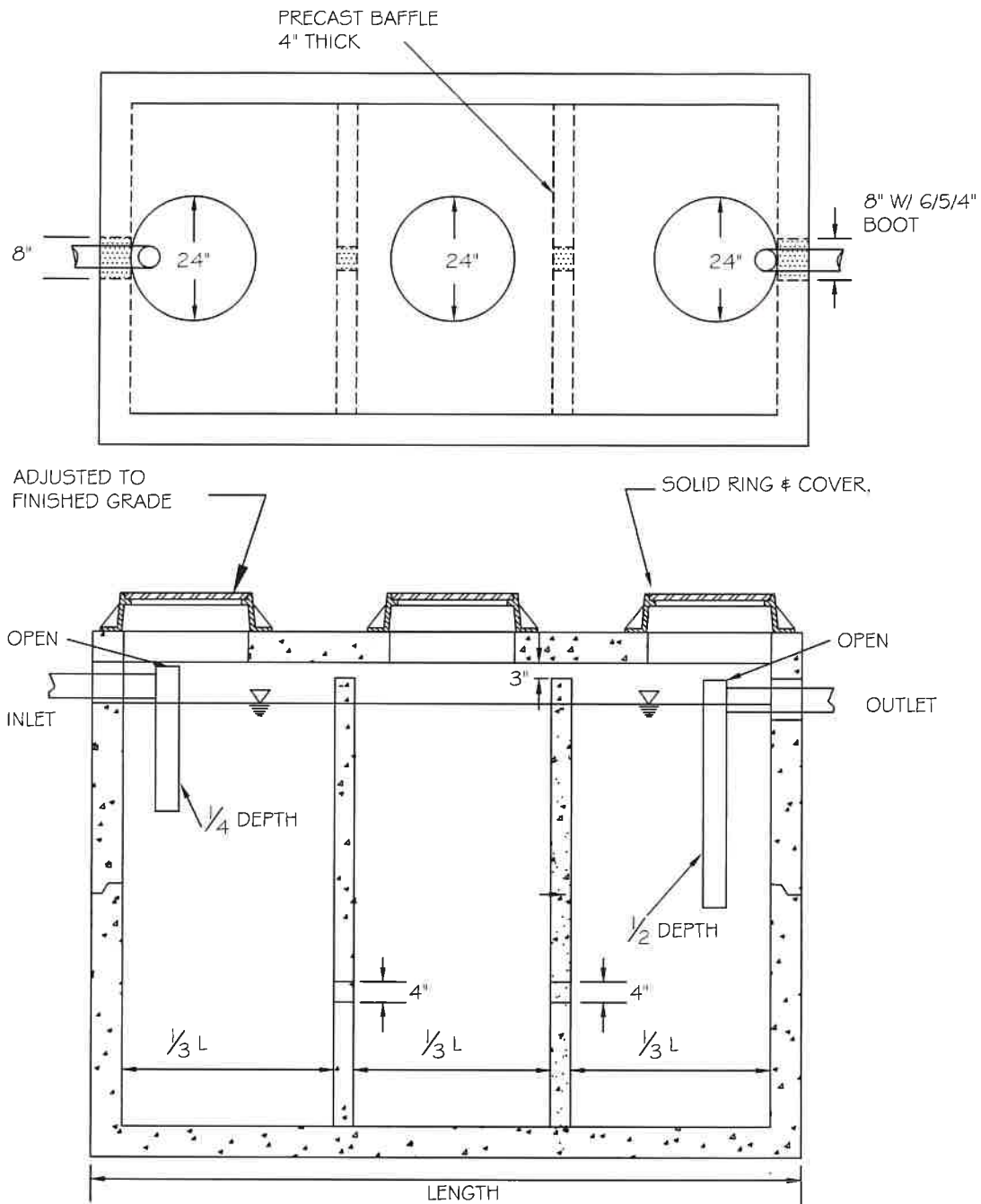
SHELBY STANDARD DETAILS - 2021

DATE	REVISIONS

GREASE TRAP DETAILS AND  
SPECIFICATION - INTERIOR  
INSTALLATION



7.02B



NOTES:

1. REINFORCEMENT: H-20 BRIDGE LOADING (TRAFFIC RATED)
2. CONCRETE: 4000 PSI @28 DAYS
3. SHALL BE LOCATED AS TO BE ACCESSIBLE FOR CLEANING AND MAINTENANCE

SHELBY STANDARD DETAILS - 2021		OIL-WATER-SAND SEPARATOR	 <b>7.02C</b>
DATE	REVISIONS		