

Carolina Harmony Trail



What is the Carolina Harmony Trail?

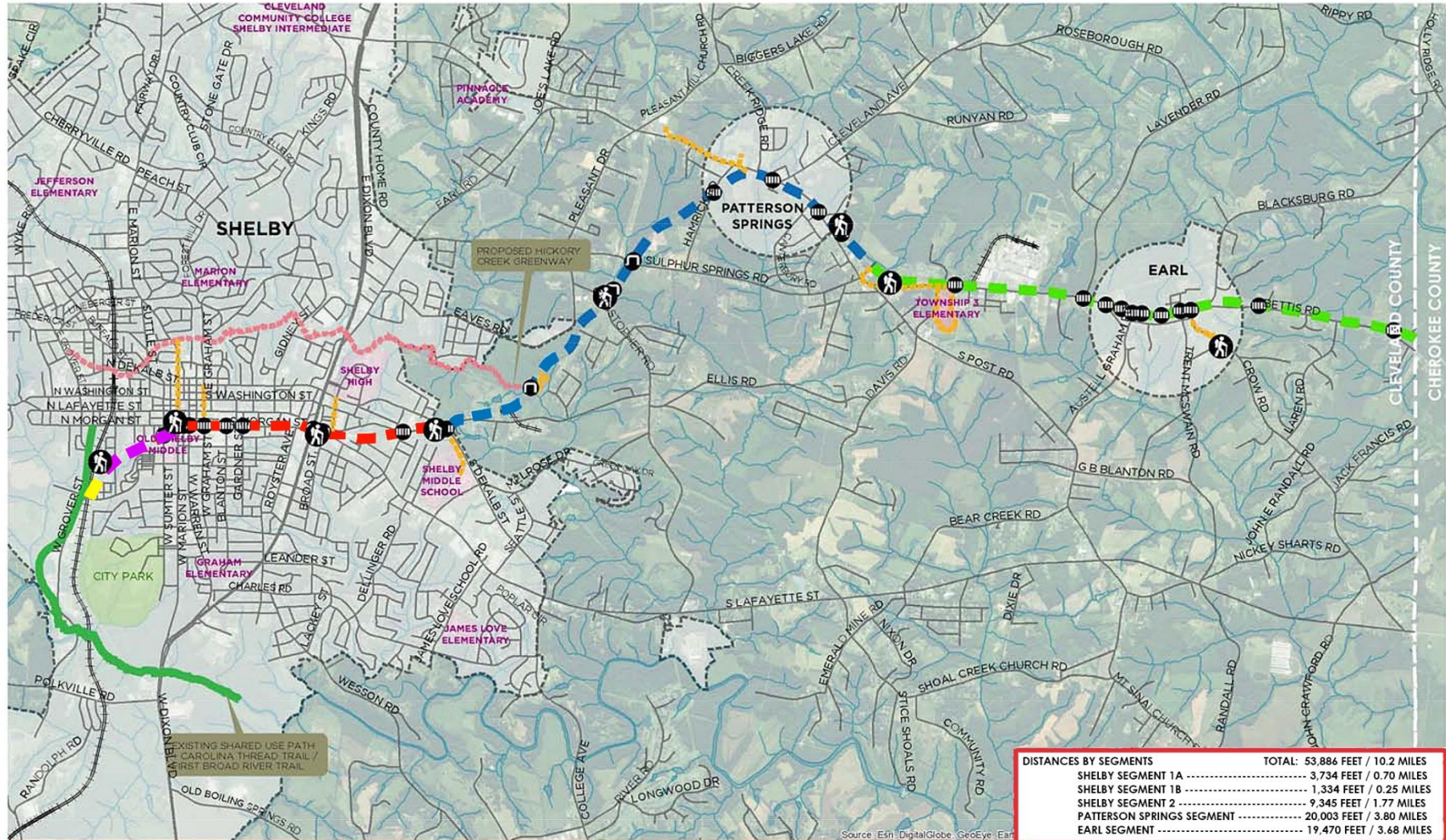
A trail system that includes 10.2 miles of unused railroad corridor running through Shelby, Patterson Springs, and Earl, North Carolina.



Timeline of acquisition of future Carolina Harmony Trail corridor property

- ❖ **June 2007**
City makes inquiry with Norfolk Southern about status of rail line in uptown area.
- ❖ **December 10, 2014**
NS Corp. notifies the City that the line is inactive and is considering abandonment through the Federal Surface Transportation Board (STB).
- ❖ **April 7, 2015**
NS Corp. requests authority from STB to abandon 11.85 miles of rail corridor.
- ❖ **June 2, 2015**
NS Corp. publishes public notice of its intent to abandon the rail line.
- ❖ **June 18, 2015**
City intervenes petitioning the STB for a Public Use Condition and establishing Notice of Interim Trail Use (Railbanking process).

Carolina Harmony Trail - Overall Map Showing All Segments



Carolina Harmony Trail

- SHELBY SEGMENT 1A
- SHELBY SEGMENT 1B
- SHELBY SEGMENT 2
- PATTERSON SPRINGS SEGMENT
- EARL SEGMENT

- EXISTING SHARED USE PATH
- PROPOSED SPUR CONNECTION
- PLANNED SHARED USE PATH
- BRIDGE CROSSING IMPROVEMENT
- ROAD CROSSING IMPROVEMENT
- NEW TRAILHEAD LOCATION
- RAIL
- CITY LIMITS
- WATER BODY
- SCHOOL PROPERTY



Overview

Carolina Harmony Trail Shelby Segment

This segment of the project focuses on approximately 2.72 miles of unused railroad corridor from Norfolk Southern.

Segment 1A - Shelby, NC

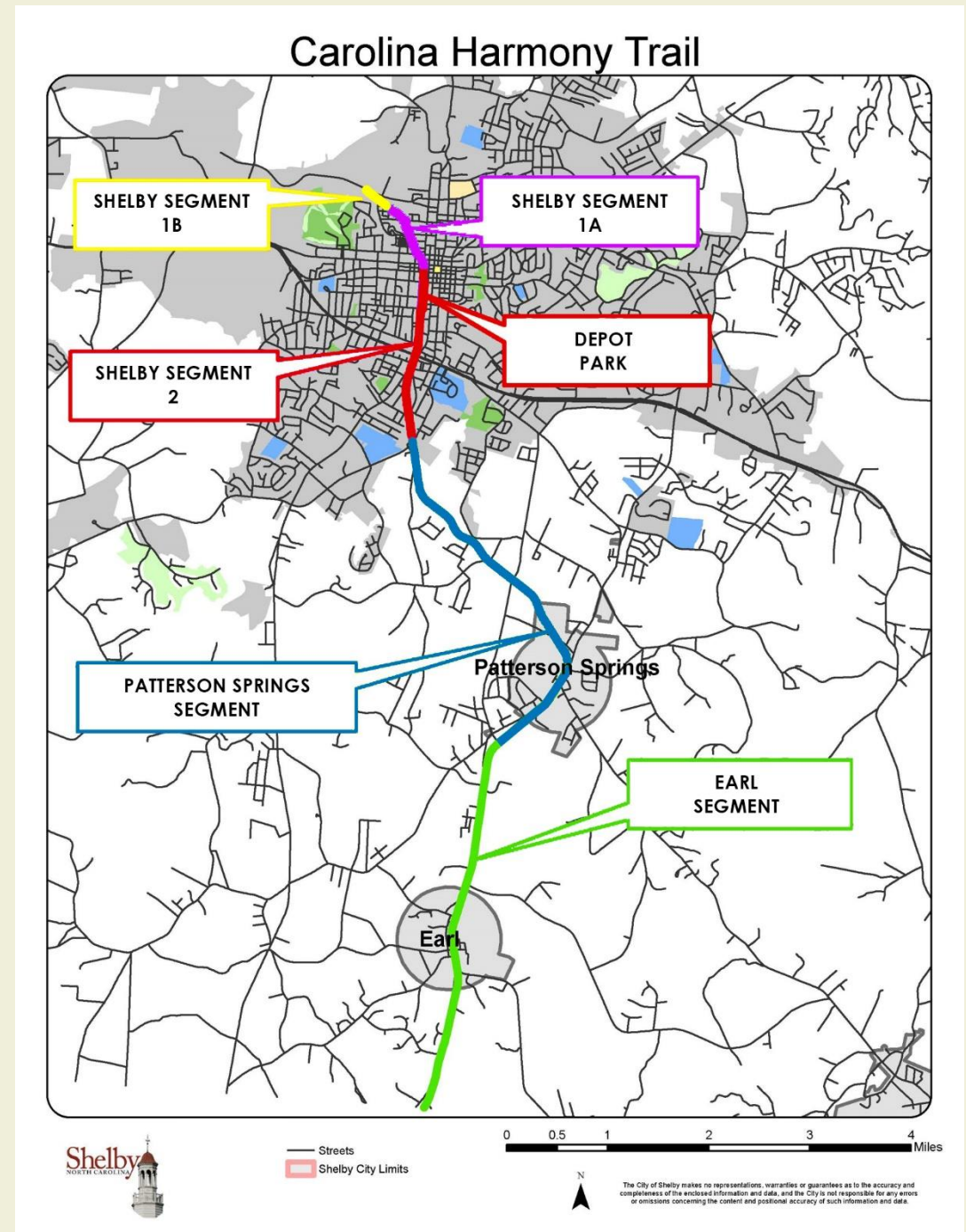
- Extends from CSX crossing to Marion St.
- Approximately 0.70 miles

Segment 1B – Shelby, NC

- Extends from Grover St. to Segment 1A trail tie-in
- Approximately 0.25 miles

Segment 2 – Shelby, NC

- Extends from Marion St. to S. Dekalb St.
- Approximately 1.77 miles
- Includes Depot Park

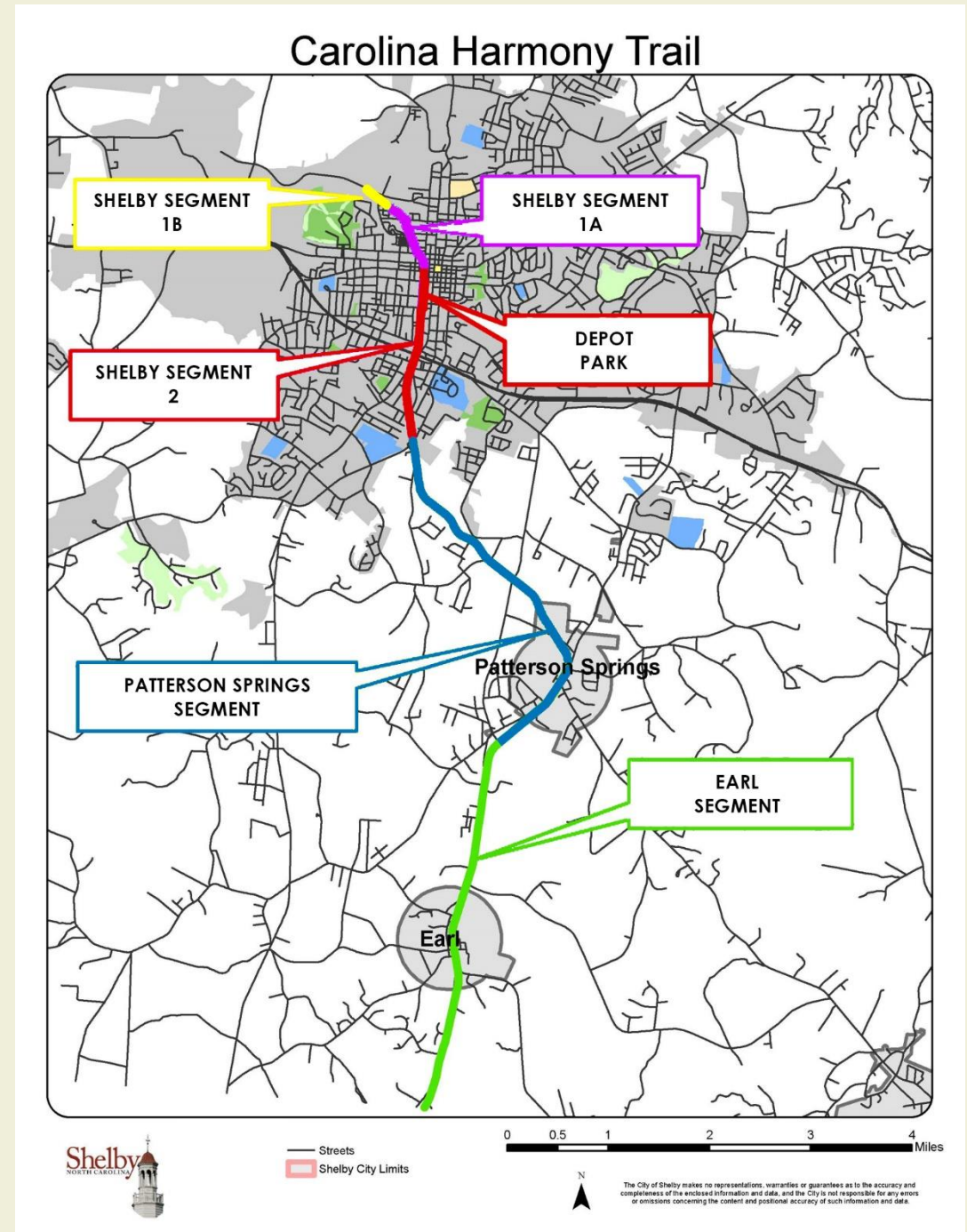


Carolina Harmony Trail Patterson Springs Segment

This segment of the project focuses on approximately 3.68 miles of unused railroad corridor from Norfolk Southern.

Patterson Springs Segment

- Extends from S. Dekalb St. to Patterson Springs, NC
- Approximately 3.68 miles

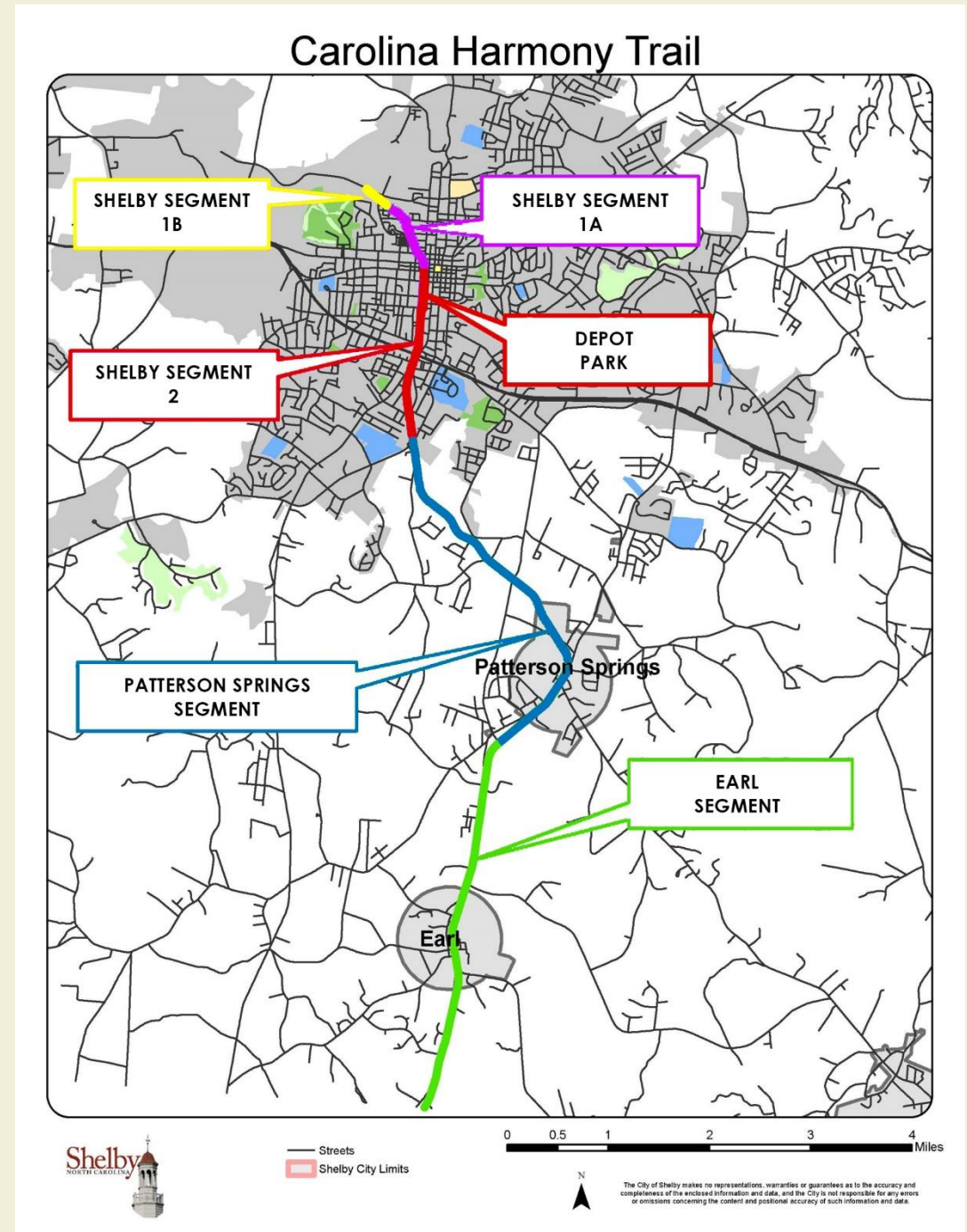


Carolina Harmony Trail Earl Segment

This segment of the project focuses on approximately 3.8 miles of unused railroad corridor from Norfolk Southern.

Earl Segment

- Extends from Earl, NC to the SC state line
- Approximately 3.8 miles





Vision for the Carolina Harmony Trail



Photo & rendering of segment adjacent Bobby Bell Pavilion





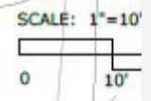
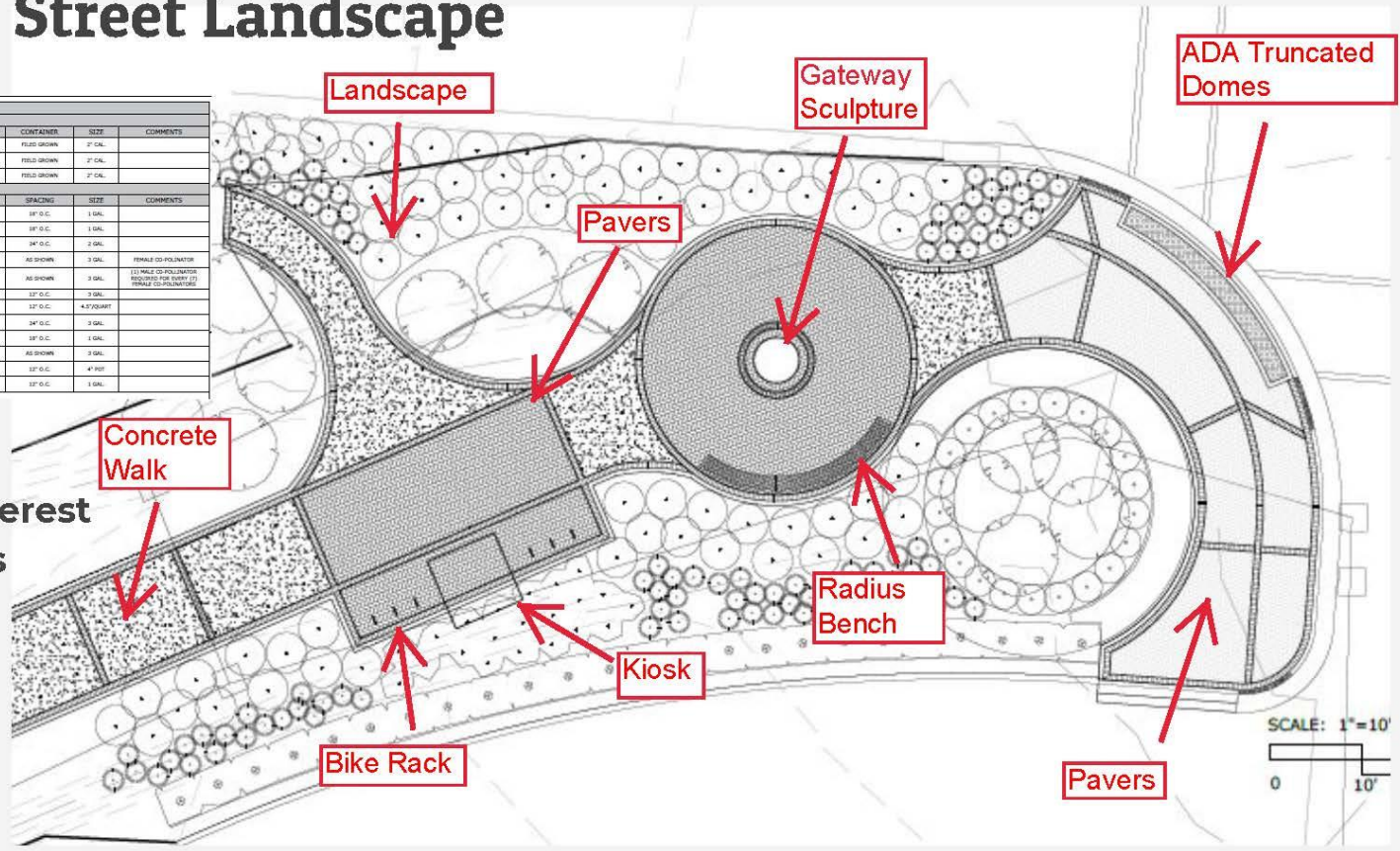
Segment adjacent Bobby Bell Pavilion Corner of Marion & Morgan Streets



Marion Street Landscape

PLANT SCHEDULE						
TREE						
CODE	QTY.	BOTANICAL NAME	COMMON NAME	CONTAINER	SIZE	COMMENTS
AR	4	RED MAHOGNIE LACINIA FLAME	RED MAHOGNIE	FIELD GROWN	2" CAL.	
PT	3	FRINGE GLEDITSIA SILVERBIRD	YOSHINO CHERRY	FIELD GROWN	2" CAL.	
PT	3	FRINGE GLEDITSIA SILVERBIRD	SILVER LINDBERGH	FIELD GROWN	2" CAL.	
SHRUBS AND GROUNDCOVERS						
CODE	QTY.	BOTANICAL NAME	COMMON NAME	SPACING	SIZE	COMMENTS
DNV	100	CHRYSOCLORUM LINDENIANUM PERSE	GOLDENSTAR	36" O.C.	1 GAL.	
DNV	80	SCYTHIA	COMPTONIA	36" O.C.	1 GAL.	
FLD	140	RUSSOIA RUSSETT'S DOGWOOD	SMOKE TREE PINK DOGWOOD	36" O.C.	2 GAL.	
TR	1	ILEX VERTICILLATA HOLLY	WINTERBERRY HOLLY	AS SHOWN	3 GAL.	REPLACE CO. POLYSTAR
DNV	2	ILEX VERTICILLATA HOLLY	WINTERBERRY HOLLY	AS SHOWN	3 GAL.	(1) MALE CO. POLYSTAR (2) FEMALE CO. POLYSTAR
LS	80	LEUCANTHEMUM SUPERBUM	SHASTA Daisy	24" O.C.	3 GAL.	
LS	200	LEUCANTHEMUM SUPERBUM	BLAZING STAR	24" O.C.	4.5 QUART	
PAV	100	PANDORUM VIRGATUM SWEETWOOD	SWITCHGRASS	36" O.C.	3 GAL.	
PAV	5	PEROVSKIA ATROPURPUREA COTON CANDY	RUSSIAN SAGE	36" O.C.	1 GAL.	
PAV	15	PEROVSKIA ATROPURPUREA	RUSSIAN SAGE	AS SHOWN	3 GAL.	
PAV	14	RUBROIA FULGIDA	BLACK EYED SUSAN	36" O.C.	4" POT	
TRG	110	THYMUS BRUNNELLICOIDES COLUMBINE	CREeping THyme	36" O.C.	1 GAL.	

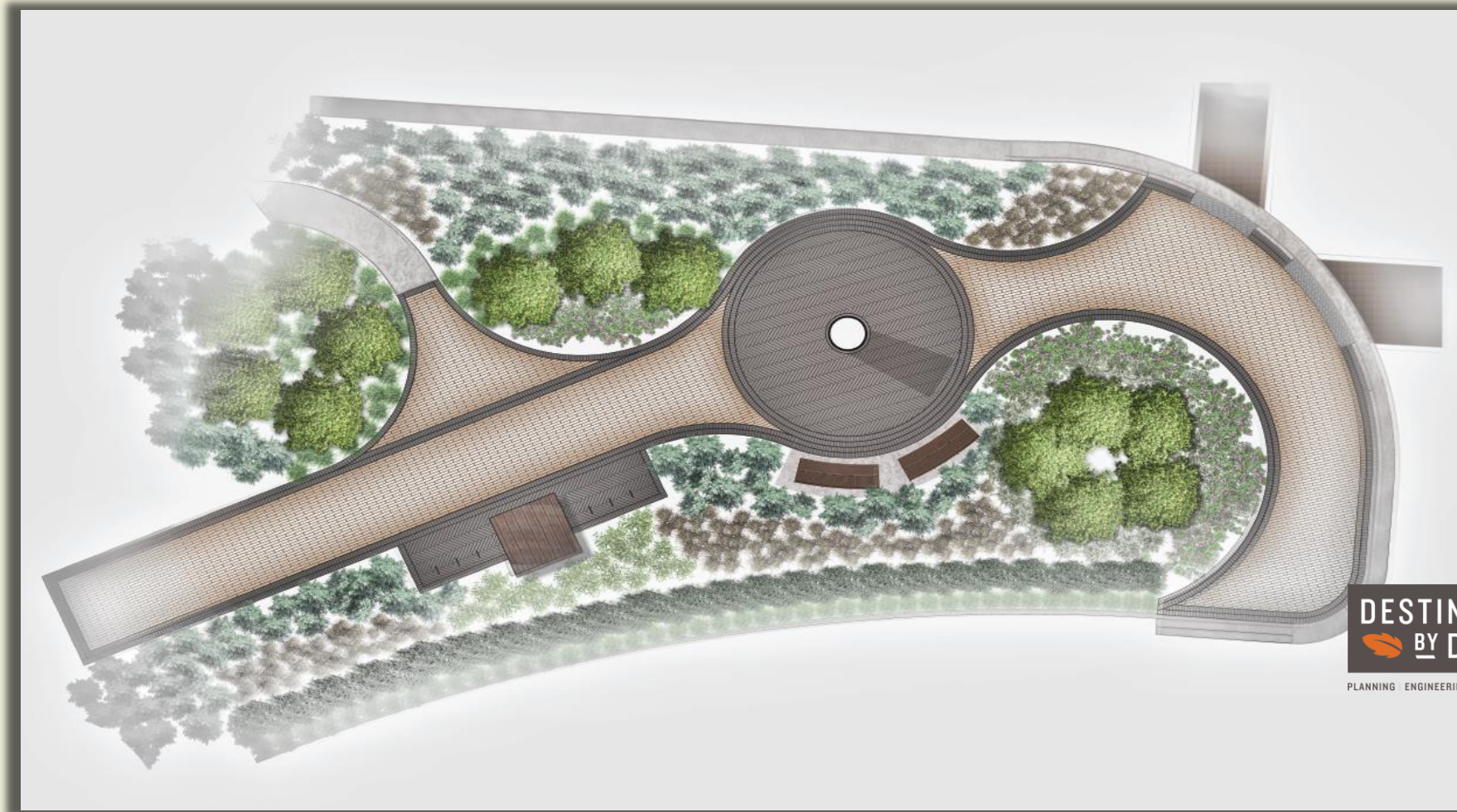
Seasonal Interest
Annual Beds
Mix of
Ornamental
and Native





Segment adjacent Bobby Bell Pavilion

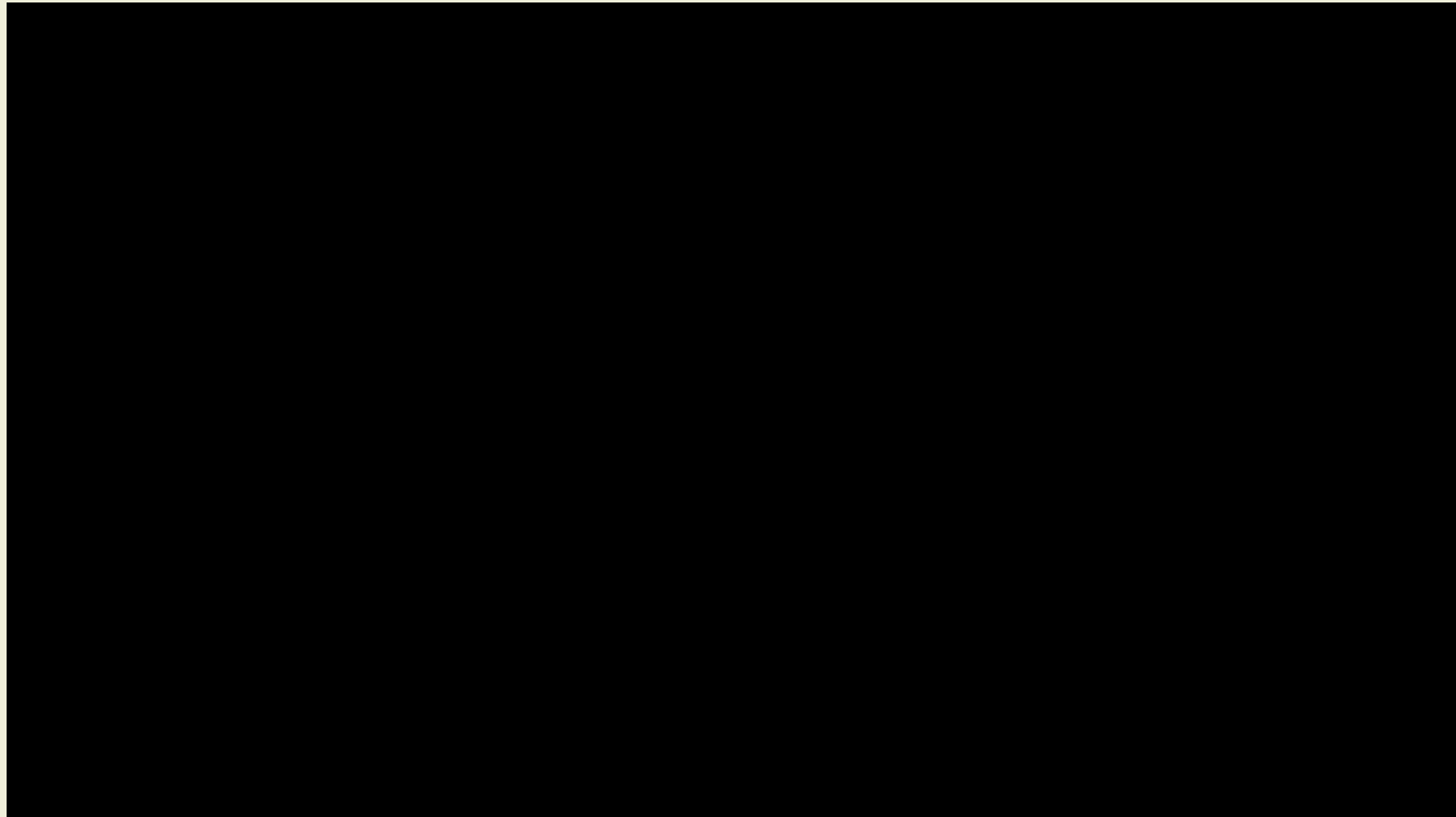
Corner of Marion & Morgan Streets



**DESTINATION
BY DESIGN**
PLANNING ENGINEERING COMMUNICATIONS



Segment adjacent Bobby Bell Pavilion
Corner of Marion & Morgan Streets





Carolina Harmony Trail

Depot Park



Photo & rendering of Depot Park





Carolina Harmony Trail

Depot Park



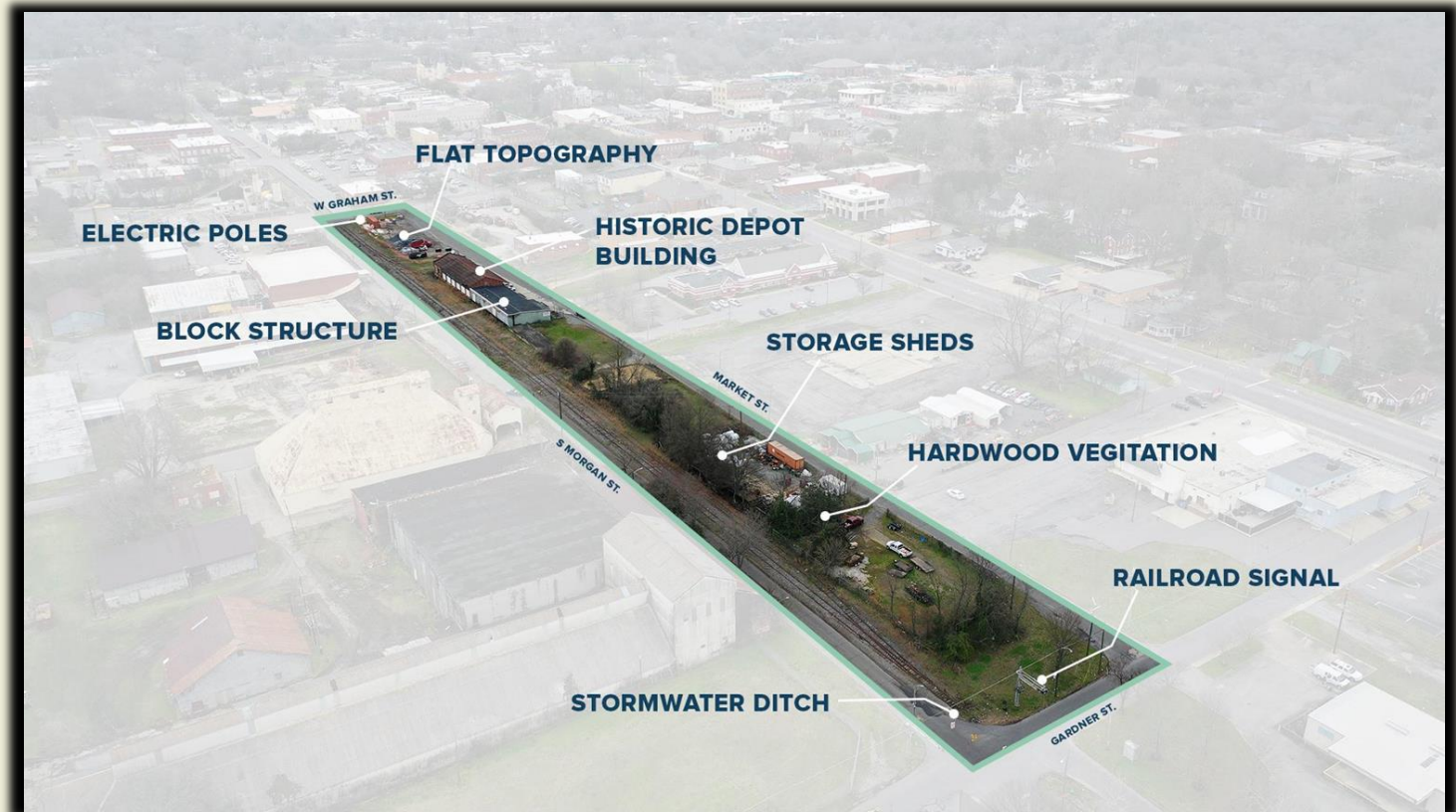
Study Area:

- Four acres
- Bounded by West Graham, Market, Gardner, and South Morgan Streets.

Natural & Built Environment:

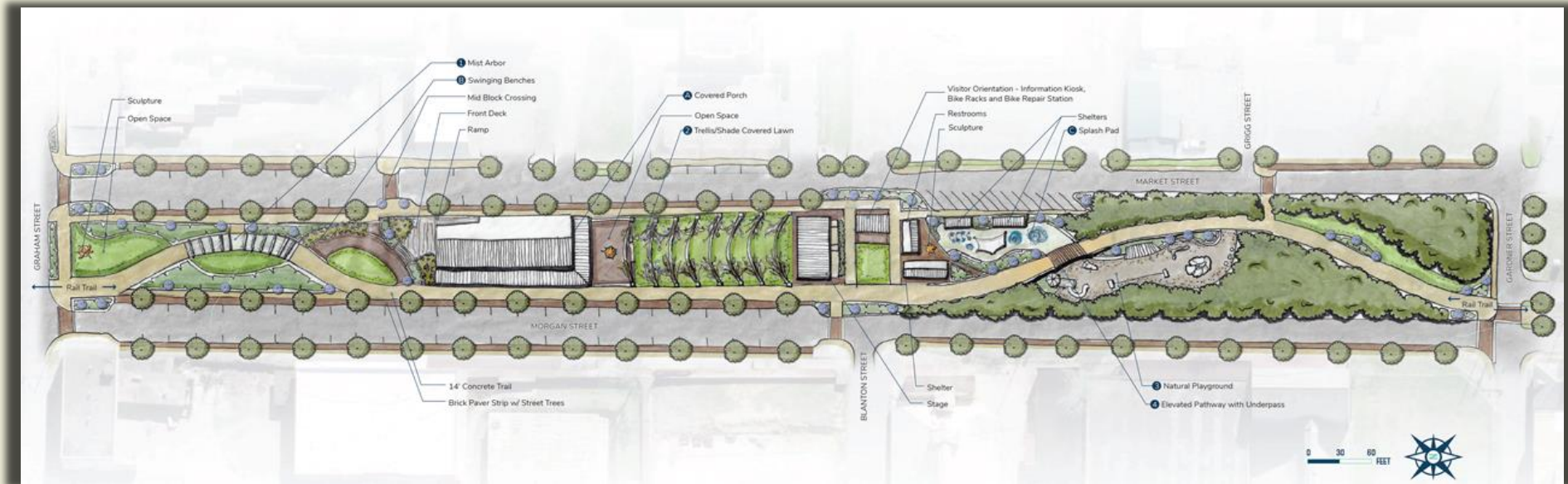
- Generally flat
- No vegetation except for a small stand of hardwoods
- NS Train Depot with addition
- Storage sheds
- Electric poles
- Old railroad signal

Existing Condition & Layout



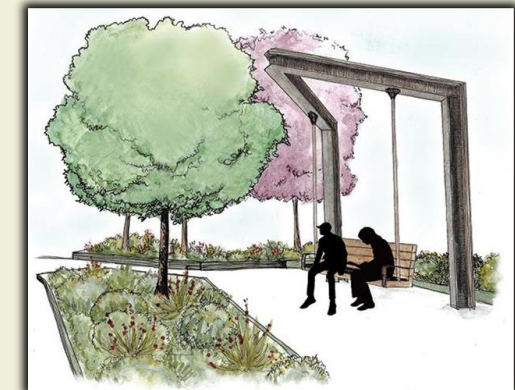


Depot Park Proposed Design



Key Features:

- Trailhead
- Mist Arbor
- Custom Benches
- Old Depot Building
- Open Green Space & Stage
- Visitor Orientation
- Restrooms & Shelter
- Splash Pad
- Adventure Playground





Depot Park Project Elements



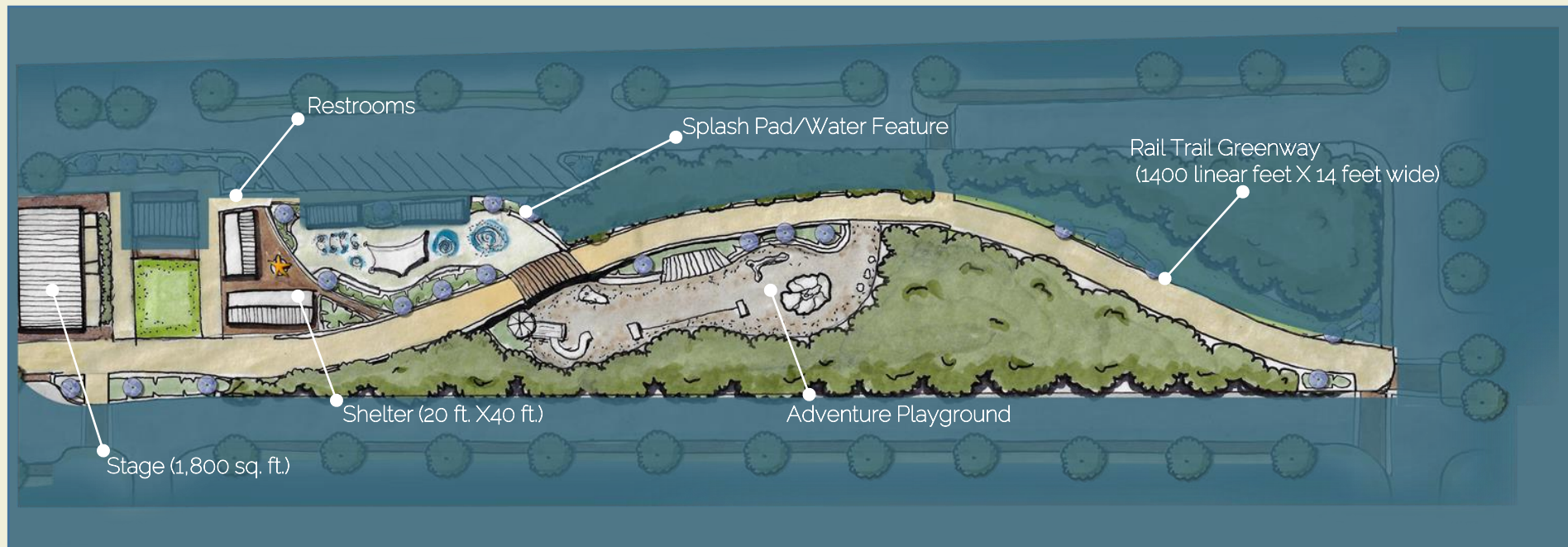
Rail Trail Greenway
(1400 linear ft. X 14 ft. wide)



Open Lawn with Trellis/Shade
Structure (approximately 9,750 sq. ft.)

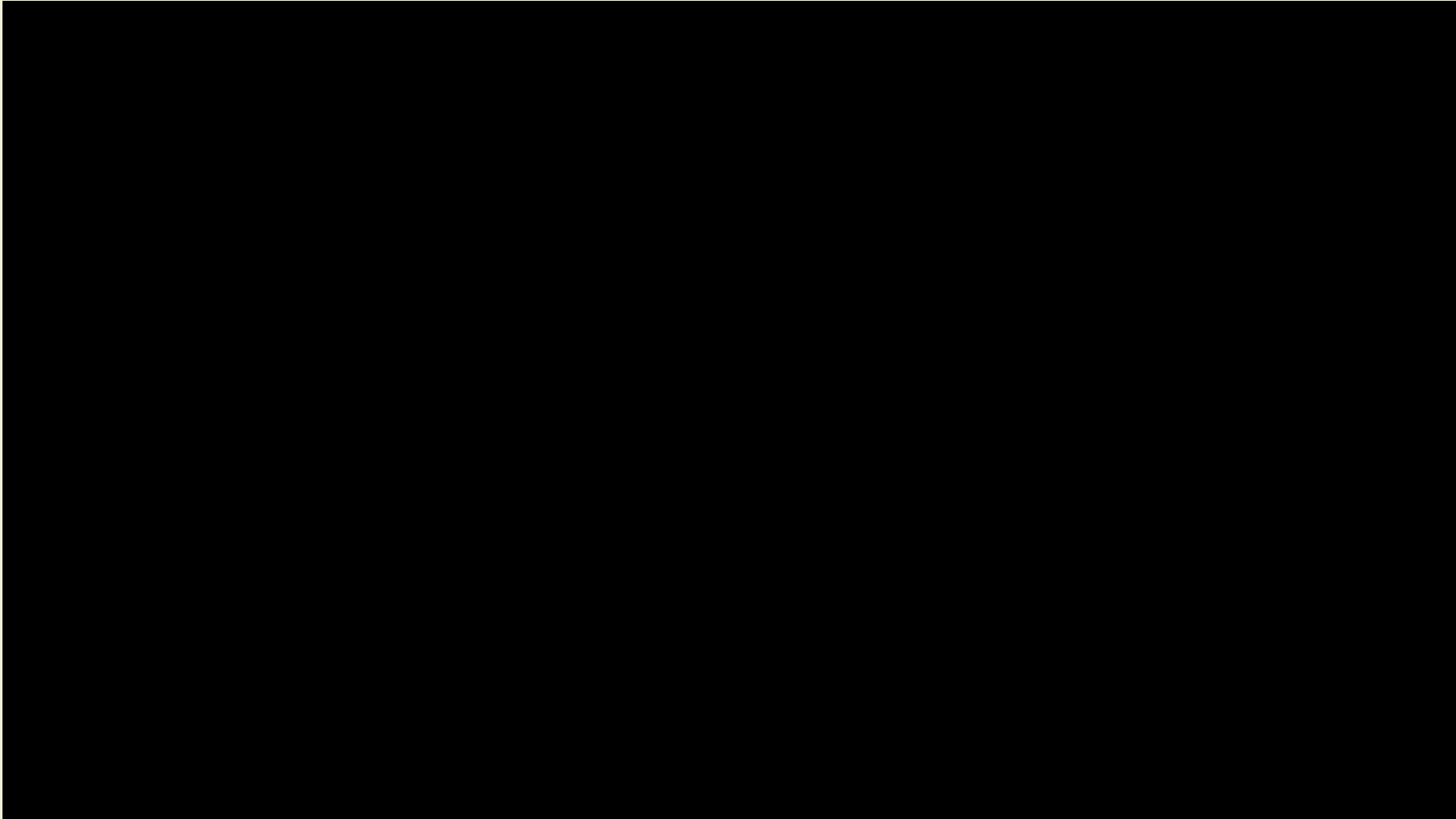


Depot Park Project Elements





Depot Park





Vision for the Carolina Harmony Trail



Photo & rendering of scenic segment of rail trail





Vision for the Carolina Harmony Trail

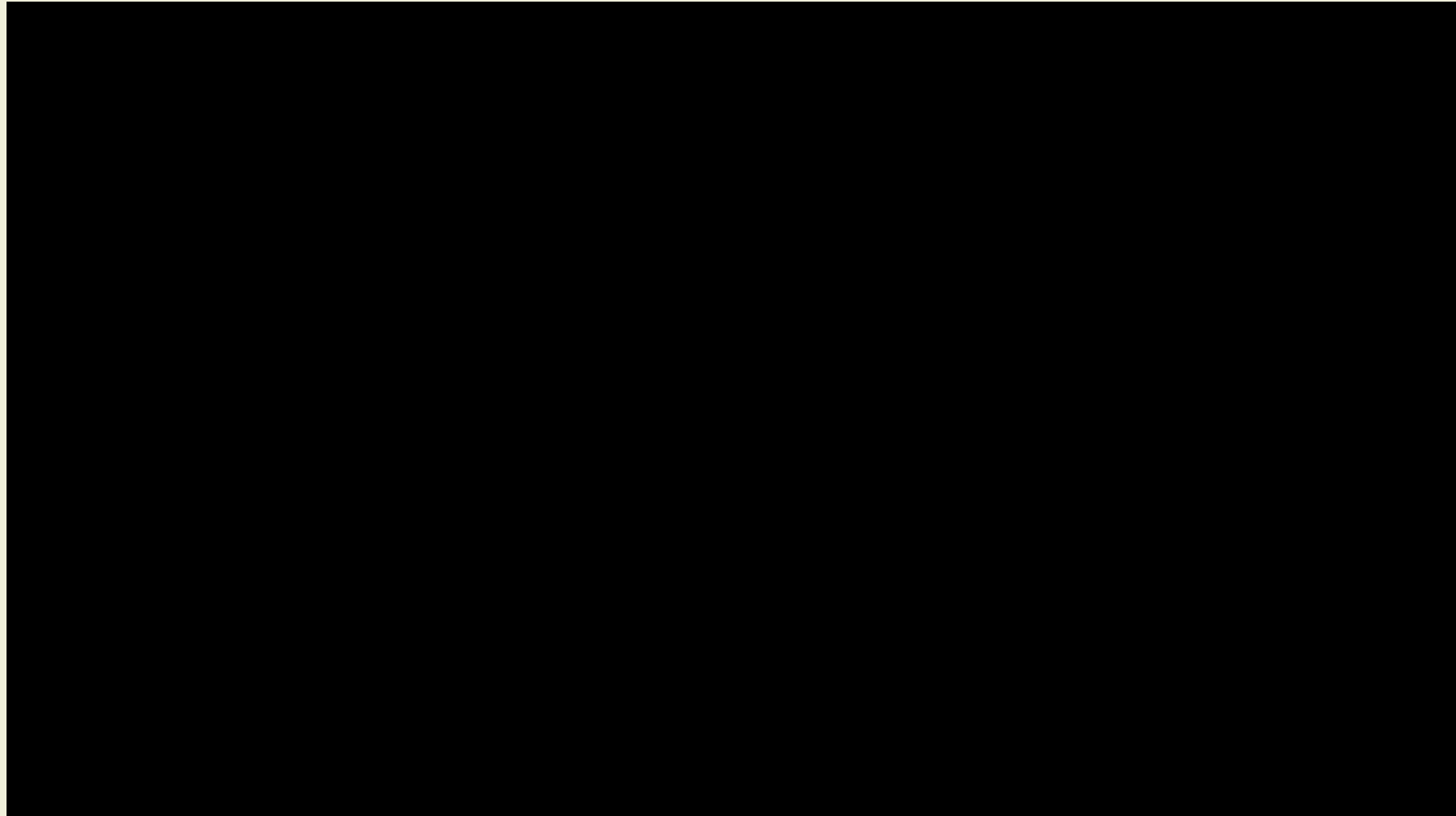


Photo & rendering of segment parallel to Lafayette Street over Highway 74



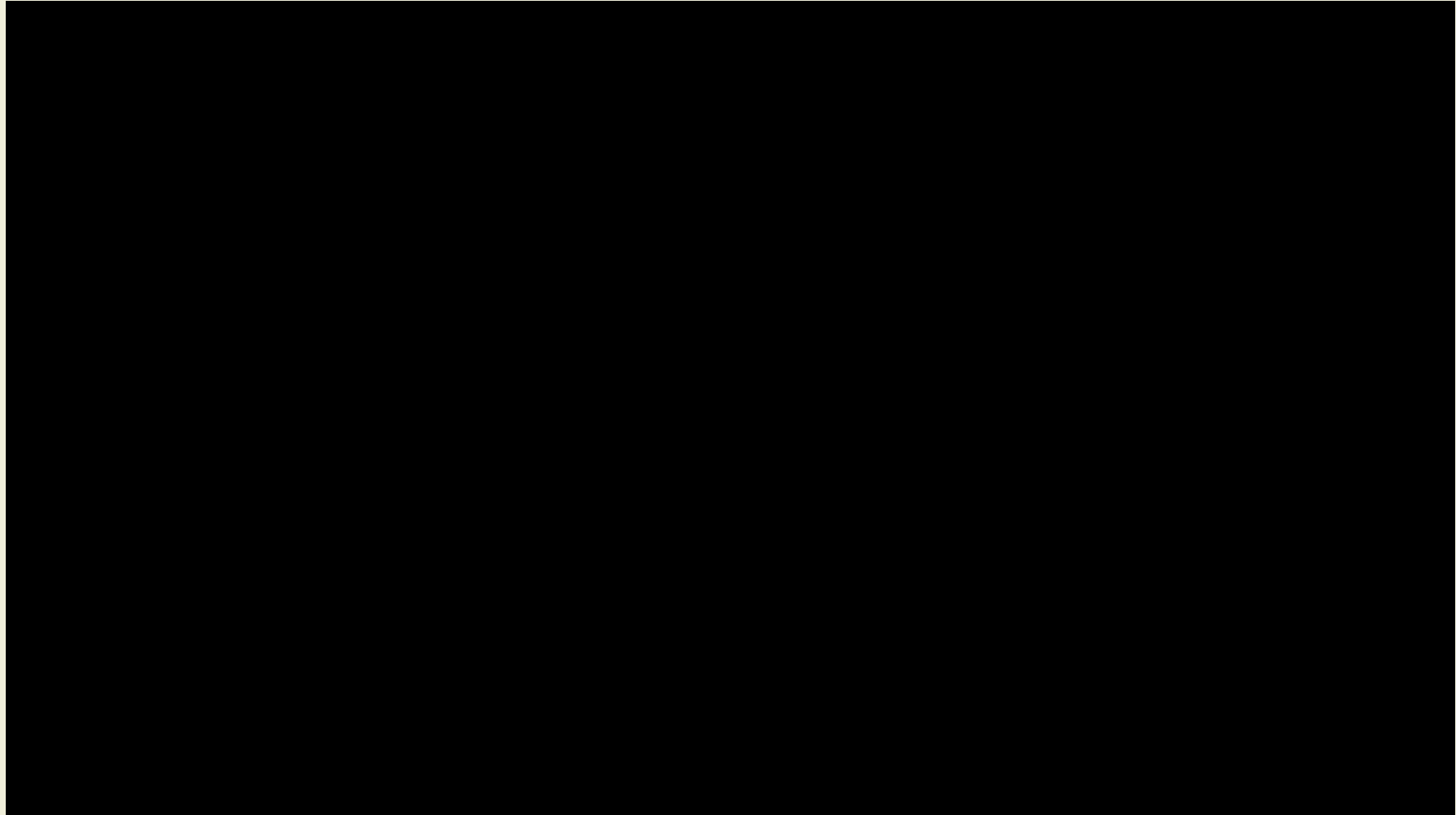


Highway 74 Overpass Segment





Dekalb Street Crossing





Designed for today's healthy lifestyle and enjoyment



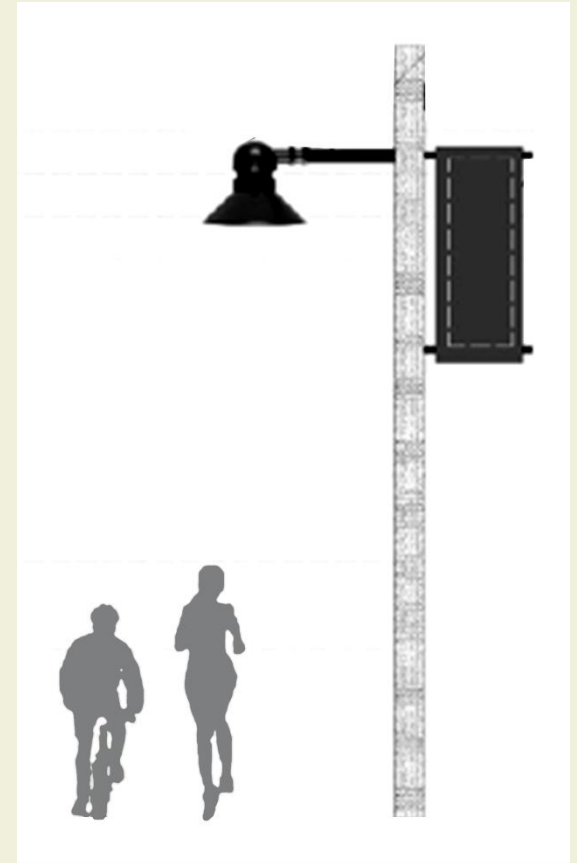


Connecting Communities



Trail Lighting

- Lighting will be utilized along the City portion of Rail Trail
- Proposed Lighting includes:
 - Powder Coated Poles
 - Banner Arms
 - Receptacles
- Utilizing the rail corridor broadband conduits will also be installed.



Main Theme

“An Emphasis on Nature
Through an Urban
Corridor”



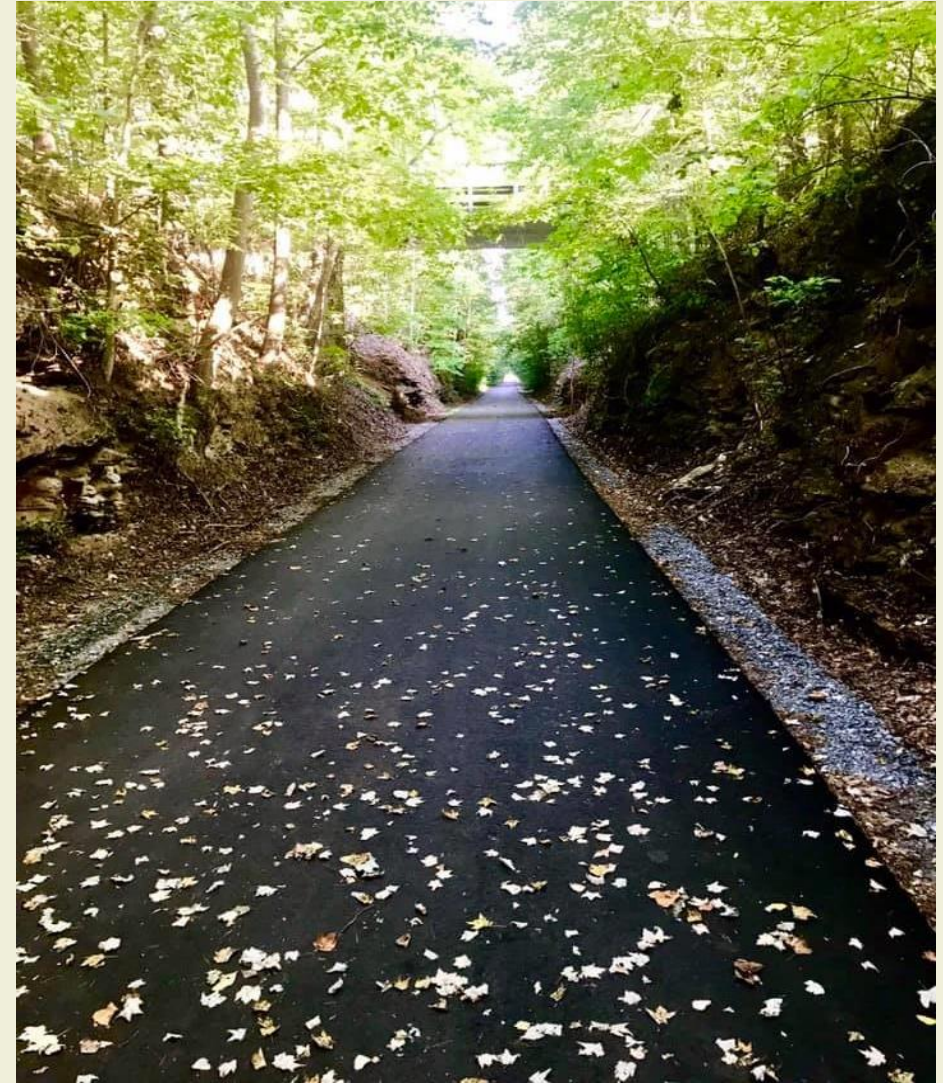
Design Features

- Drainage improvements
- Asphalt Surface
- Concrete Walks
- Pavers and ADA truncated domes
- Retaining walls
- Fencing
- Lane reconfiguration
- Bicycle racks
- Artwork
- Seating walls and benches
- Curb extensions
- Landscaping
- Lighting
- Broadband conduits
- Grade adj. at Sumter St. Bridge
- Gateway Sculpture
- Mile markers



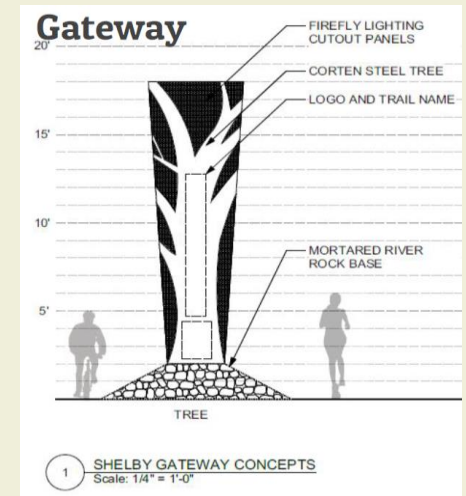
Multi-Use Path

13' wide Multi-Use Path that will utilize either an asphalt or concrete surface



Intersection Features

- Pavers
 - High contrast paver layout
- Kiosk
 - Information Center
 - Approximately 9' tall
- Gateway Sculpture
 - 18' tall sculpture
 - Creates a unique guide for the trail
 - Illuminates creating an eye-catching sculpture





When the public was asked to describe the potential of the Carolina Harmony Trail, the most common words used were:



- **Healthy**
- **Family**
- **Fitness**
- **Community**
- **Growth**
- **Tourism**

Each of these words are directly connected to the project vision, which focuses on public health, quality of life, and economic development.



Benefits of the Carolina Harmony Trail

Health Benefits



PHYSICAL ACTIVITY

30%

OF LOCAL ADULTS
DON'T GET ENOUGH
PHYSICAL ACTIVITY



IMPLEMENTATION
COULD LEAD TO

176k

MORE HOURS OF
EXERCISE PER YEAR

MILES OF BIKING & WALKING

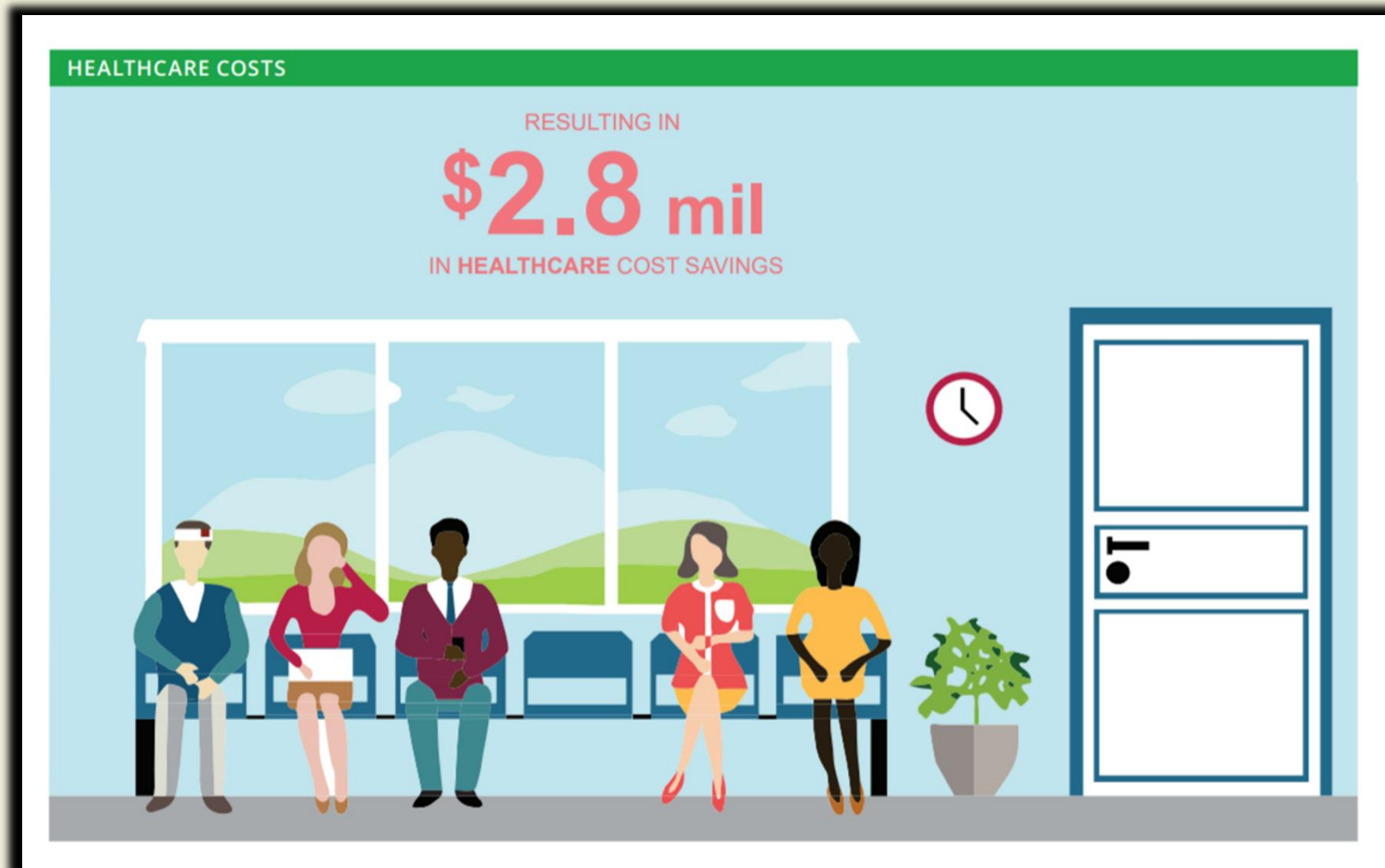
THROUGH
7.6 mil
MORE MILES BIKED &
WALKED PER YEAR



...enough to travel across North Carolina 45,000 times



Benefits of the Carolina Harmony Trail Health Benefits





Benefits of the Carolina Harmony Trail

Economic Benefits



**Based on the results from 3 other trails in North Carolina,
the annual economic impact to our community from the
Carolina Harmony Trail is estimated at:**

\$17,035,000

(Economic data from Duck, Brevard and Durham, North Carolina)



Benefits of the Carolina Harmony Trail

Economic Benefits



\$6,415,000 in annual restaurant spending
\$5,469,000 in annual grocery store spending
\$4,318,000 in annual retail spending
\$298,000 in annual entertainment spending
\$535,000 in annual bicycle rental spending

For a total in \$17,035,000 in estimated annual trail-related spending from non-local trail users.

Trail Schedule

Shelby Segment 1-A (CSX Crossing to Marion St.)

- Construction plans completed in April 2022
- Bid Opening in May 2022
- Construction in August 2022 to Spring 2023

Shelby Segment 1-B (Extends from Grover St. to Segment 1A trail tie-in)

- Design and permitting to begin in Summer 2022

Shelby Segment 2 (Extends from Marion St. to Dekalb St.)

- Plans are currently 30% complete
- Bid Opening in October 2022
- Construction in December 2022 to Fall 2024



Patterson Springs & Earl Segments (Dekalb St. to SC state line)

- Environmental and planning documents in progress. To be completed April 2023
- Plans – To be determined
- Construction – To be determined



“The trail is kind of an anchor. I think we could make our county a real recreational destination.”

**Mayor Stan Anthony
Shelby, NC**

**Join us in supporting the
Carolina Harmony Trail.**



**Working together, we can give our community
a beautiful trail system that will rival any other!**